

# LANGLADE COUNTY U.S. PUBLIC LAND CORNER RESTORATION

The Southeast corner of Section 30, T. 30 N., R. 11 E., Langlade County, WI.

**Corner was: (check all that apply)**

4301130 0000

- Restored through acceptance of an obliterated evidence location.
- Restored through acceptance of a found perpetuated location.
- Determined to be lost and re-established through proportionate methods.
  - Show bearings and distances to PLSS corners used for proportioning, and show original distances).
  - Restored/recovered/re-established in a location that differs from a previously established position.
- (Show difference in plan view below).
- Check here if additional information is shown on the reverse side of this form.

**Describe record evidence, recovered physical evidence, occupational evidence, testimonial evidence and all other evidence considered in the recovery/restoration of the corner.**

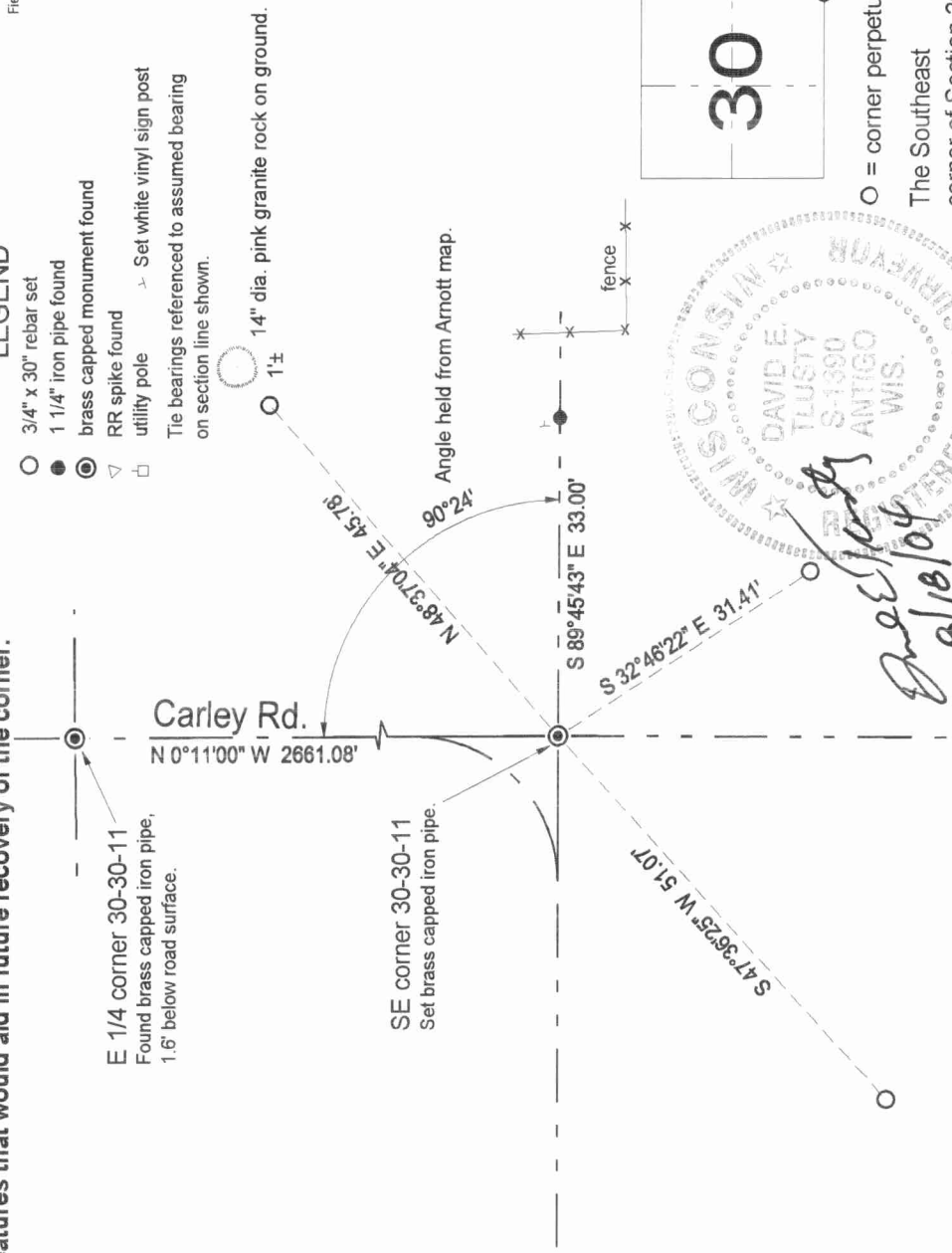
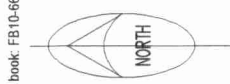
The original corner was established in 1853 by William T. Bradley. Original bearing trees: ironwood, 8", N76°W, 25 links and a birch, 8", S64°E, 10 links. In 1996, Tom Arnott re-established the corner: "No evidence found. I doubled the distance from the 1/4 corner to the west to the E1/16 and then I doubled the distance from the 1/4 corner to the north, south to the S 1/16." He set a 2" iron pipe with 4" brass cap and some ties. 09/04/02 D. Tlusty, Norm Cejka found the corner monument had been removed. We re-set a spike for the corner from the pipe Arnott set 33.00' east of the corner and by using the angle from his June 1996 survey to the Northeast. Road work is planned for this area. 08/17/04 D. Tlusty again re-set corner same as in 2002. Road work has been completed so I re-set Arnotts monument and added ties as shown below.

**Physical description of the monument set:**

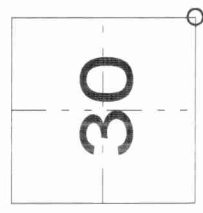
For the corner, I set a Berritsen Deep1 magnet, 4' below ground. I then re-stamped and re-set the monument (a 1 1/4" (ID) x 36" iron pipe with a 4" dia. brass cap bolted to the top) previously set by Arnott which had been removed and was found leaning against a nearby power pole. The top of the re-set monument is 0.6' below ground.

**Describe the accessories used to perpetuate the corner. Include a plan view drawing and accessories found/set. Describe measuring point on bearing trees. Show any topographic features that would aid in future recovery of the corner.**

- Field book: FB10-66
- 3/4" x 30" rebar set
  - 1 1/4" iron pipe found
  - brass capped monument found
  - RR spike found
  - utility pole
  - Set white vinyl sign post
- Tie bearings referenced to assumed bearing on section line shown.



Index No. 30-11 <sup>V5</sup>



O = corner perpetuated  
The Southeast corner of Section 30, T. 30 N., R. 11 E., Langlade County, WI



I, David E. Tlusty, Registered Land Surveyor, as Langlade County Surveyor, certify that the corner location on this record was determined by me and that this U.S. Public Land Survey Monument Record is correct to the best of my knowledge and belief.