

CERTIFIED LAND CORNER RESTORATION

Index No. V-11

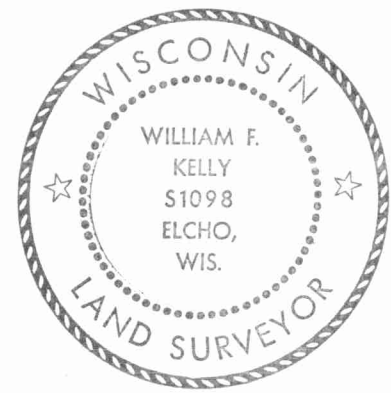
State of Wisconsin }
 County of LANGLADE } ss.

I WILLIAM F. KELLY, do hereby certify that on the 12th day of JAN., 19 82, I found evidence of the S 1/4 corner of SECT. 28 Township 30, North, Range 11 EAST, Fourth Principal Meridian, as described hereon; and that from this evidence I established a new monument and accessories as described hereon to perpetuate the original location of this corner.

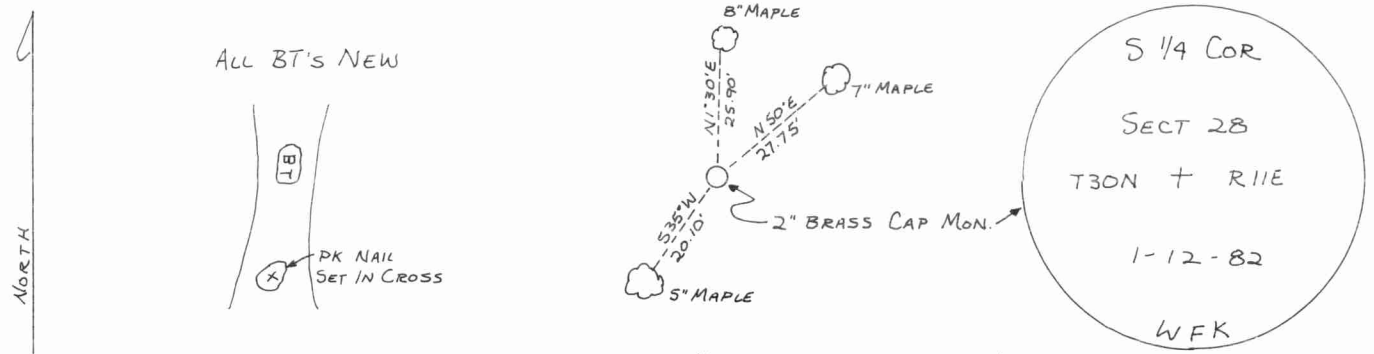
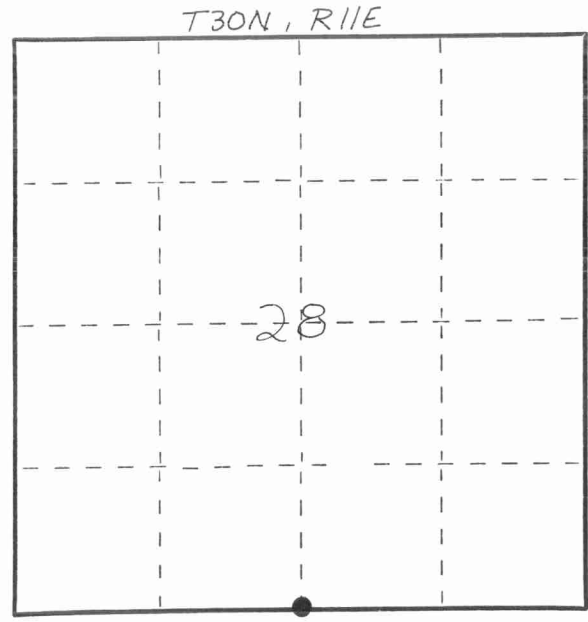
Resident witnesses:

History of original corner establishment:
ORIGINAL CORNER ESTABLISHED BY
WM T. Bradley IN OCT, 1853.

Description of corner evidence found:
SET A 2" x 42" BLACK IRON PIPE
WITH BRASS CAP MONUMENT.



Description of monument and accessories I established to perpetuate the original location of this corner.



FORM 985 H. C. MILLER CO., MILWAUKEE 43011280020

Dated at ELCHO, Wis., this 12th day of JAN., 19 82.

Signature William F. Kelly Title COUNTY SURVEYOR Registration No. 1098
 (County Surveyor, Registered Land Surveyor, or other duly authorized official)

Office of Register of Deeds, County of _____, I hereby certify that the within instrument was filed in this office for record on the _____ day of _____, 19 _____ at _____ o'clock _____ M.

 (Register of Deeds)
 By _____ Deputy

○ = Corner monument restored.