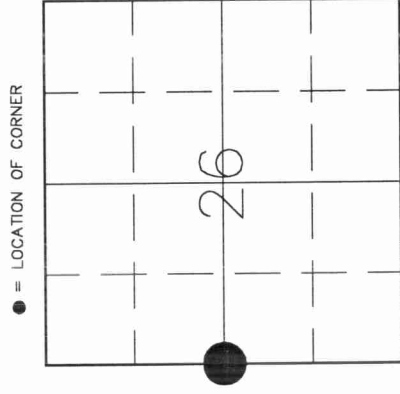


U.S. PUBLIC LAND SURVEY MONUMENT RECORD

HISTORY OF ORIGINAL CORNER ESTABLISHMENT AND SUBSEQUENT RESTORATION AND DESCRIPTION OF ANY RECORD, MONUMENT OCCUPATIONAL, TESTIMONIAL OR OTHER EVIDENCE CONSIDERED:

THE ORIGINAL CORNER WAS ESTABLISHED IN 1853 BY WILLIAM T. BRADLEY. ORIGINAL BEARING TREES: MAPLE 10" N86E 25LKS., BIRCH 10" S85W 24LKS. ON 8/19/97, BECKY AND GERRY BAHAR SEARCHED FOR CORNER. COULD NOT FIND ANY EVIDENCE OF ITS LOCATION. WE COULD NOT FIND ANY 40 FENCES THAT WOULD HELP US WITH THE LOCATION OF THE W 1/4 CORNER. WE SET A PK NAIL ON CENTERLINE OF SUGARBUSH RD. AT THE MIDPOINT BETWEEN THE SOUTHWEST AND THE NORTHWEST CORNERS OF SECTION 26.

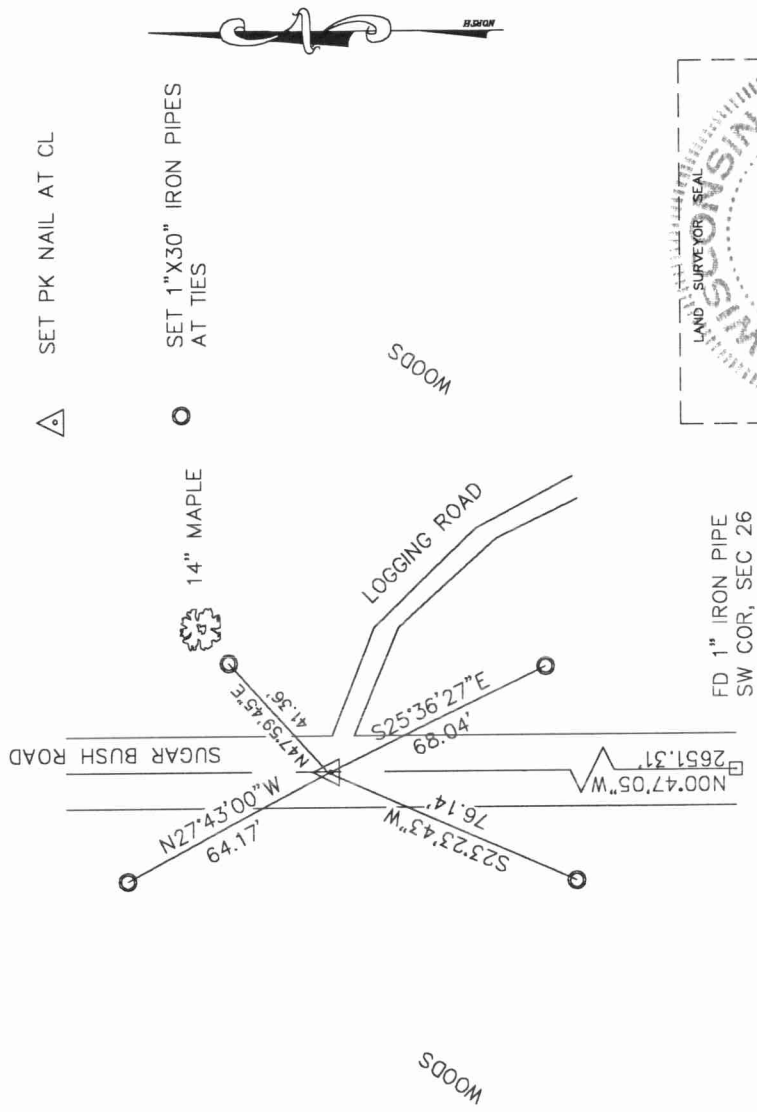


SECTION 26
 TOWNSHIP 30 NORTH, RANGE 11 EAST
 TOWN OF ROLLING
 LANGLADE COUNTY, WISCONSIN

CORNER WAS: (CHECK ALL THAT APPLY)

- RESTORED THROUGH ACCEPTANCE OF AN OBLITERATED EVIDENCE LOCATION
- RESTORED THROUGH ACCEPTANCE OF A FOUND PERPETUATED LOCATION
- CONSIDERED A LOST CORNER AND REESTABLISHED THROUGH LOST CORNER PROPORTIONATE METHODS (INCLUDE A PLAN VIEW DRAWING SHOWING DISTANCES AND DIRECTIONS TO OTHER PUBLIC LAND SURVEY CORNERS USED FOR PROPORTIONING AND DETERMINING THE CORNER LOCATION)
- RESTORED OR REESTABLISHED IN A LOCATION THAT DIFFERS FROM A PREVIOUS RESTORATION OR REESTABLISHMENT (INCLUDE A PLAN VIEW DRAWING AND INDICATE WHAT WAS SET AND/OR FOUND)
- CHECK IF THERE IS ADDITIONAL INFORMATION ON BACK

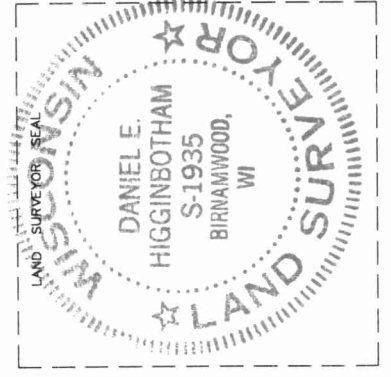
DESCRIBE THE MONUMENT AND ACCESSORIES USED TO PERPETUATE THE LOCATION OF THE CORNER. (INCLUDE A PLAN VIEW DRAWING AND INDICATE WHAT WAS SET AND/OR FOUND) ALSO INCLUDE FOUR TIES TO THE SECTION CORNER AND DESCRIPTION OF THE TIES.



43011272000

T17

DANIEL E. HIGGINBOTHAM
 (Type or print name) CERTIFY THAT THE CORNER LOCATION SHOWN ON THIS RECORD WAS DETERMINED BY ME OR UNDER MY DIRECTION AND CONTROL AND THAT THIS U.S. PUBLIC LAND SURVEY MONUMENT RECORD IS CORRECT AND COMPLETE TO THE BEST OF MY KNOWLEDGE AND BELIEF.
Daniel Higginbotham
 SIGNATURE 4/3/00 DATE



INDEX NO.