

4301126 0000

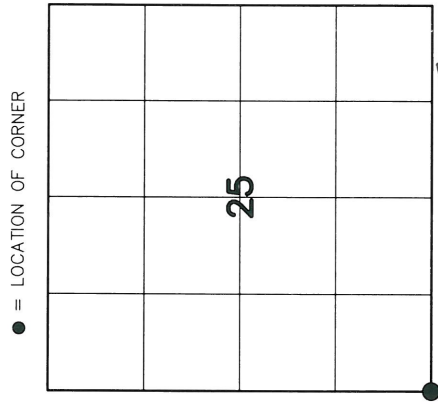
# U.S. PUBLIC LAND SURVEY MONUMENT RECORD

HISTORY OF ORIGINAL CORNER ESTABLISHMENT AND SUBSEQUENT RESTORATION AND DESCRIPTION OF ANY RECORD, MONUMENT OCCUPATIONAL, TESTIMONIAL OR OTHER EVIDENCE CONSIDERED:

THE ORIGINAL CORNER WAS SET BY BRADLEY IN 1853. THE ORIGINAL BEARING TREES WERE

19" MAPLE - N 7°E 40 LINKS  
10 MAPLE - N59°W 33 LINKS

KELLY SAID HE FOUND A RR SPIKE IN 1985, HIGGINBOTHAM FOUND THE SAME RR SPIKE IN 2000 WHILE DOING WORK IN SECTION 26. WE HAD TIED INTO THE RR SPIKE PRIOR, WHILE DOING OTHER WORK IN SECTION 26. NEW PAVEMENT AT THE INTERSECTION REMOVED THE RR SPIKE. WE SET A PK NAIL AT THE LOCATION THAT WE HAD LOCATED PRIOR AND SET NEW TIES.



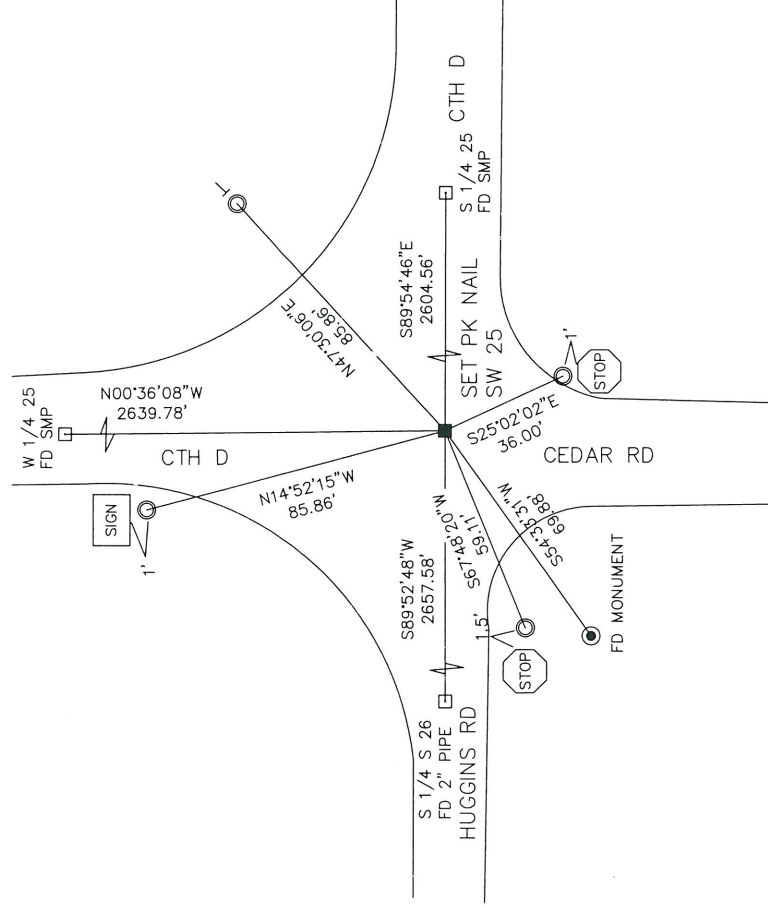
● = LOCATION OF CORNER

SECTION ~~30~~ 25  
TOWNSHIP 30 NORTH, RANGE 11 EAST  
TOWN OF ROLLING  
LANGLADE COUNTY, WISCONSIN

CORNER WAS: (CHECK ALL THAT APPLY)

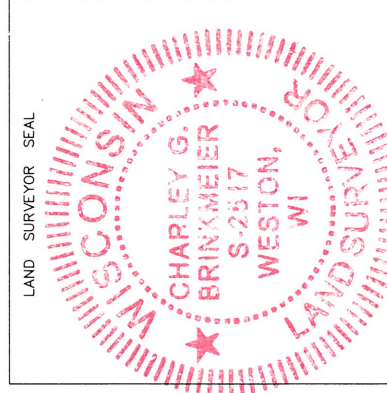
- RESTORED THROUGH ACCEPTANCE OF AN OBLITERATED EVIDENCE LOCATION
- RESTORED THROUGH ACCEPTANCE OF A FOUND PERPETUATED LOCATION
- CONSIDERED A LOST CORNER AND REESTABLISHED THROUGH LOST CORNER PROPORTIONATE METHODS (INCLUDE A PLAN VIEW DRAWING SHOWING DISTANCES AND DIRECTIONS TO OTHER PUBLIC LAND SURVEY CORNERS USED FOR PROPORTIONING AND DETERMINING THE CORNER LOCATION)
- RESTORED OR REESTABLISHED IN A LOCATION THAT DIFFERS FROM A PREVIOUS RESTORATION OR REESTABLISHMENT (INCLUDE A PLAN VIEW DRAWING AND INDICATE WHAT WAS SET AND/OR FOUND)
- CHECK IF THERE IS ADDITIONAL INFORMATION ON BACK

DESCRIBE THE MONUMENT AND ACCESSORIES USED TO PERPETUATE THE LOCATION OF THE CORNER. (INCLUDE A PLAN VIEW DRAWING AND INDICATE WHAT WAS SET AND/OR FOUND) ALSO INCLUDE FOUR TIES TO THE SECTION CORNER AND DESCRIPTION OF THE TIES.



SET 3/4"X24" PIPES AT ALL TIE LOCATIONS

BEARING REFERENCED TO THE LANGLADE COUNTY COORDINATE SYSTEM



CHARLEY G. BRINKMEIER

(Type or print name) CERTIFY THAT THE CORNER LOCATION SHOWN ON THIS RECORD WAS DETERMINED BY ME OR UNDER MY DIRECTION AND CONTROL AND THAT THIS U.S. PUBLIC LAND SURVEY MONUMENT RECORD IS CORRECT AND COMPLETE TO THE BEST OF MY KNOWLEDGE AND BELIEF.

*Charley G. Brinkmeier*  
SIGNATURE  
12-19-11  
DATE

INDEX NO. V/21 30-11