

LANGLADE COUNTY U.S. PUBLIC LAND CORNER RESTORATION

The Southeast corner of Section 25, T. 30 N., R. 11 E., Langlade County, WI.

Corner was: (check all that apply)

4301125 0000

- Restored through acceptance of an obliterated evidence location.
- Restored through acceptance of a found perpetuated location.
- Determined to be lost and re-established through proportionate methods.
- Show bearings and distances to PLSS corners used for proportioning, and show original distances).
- Restored/recovered/re-established in a location that differs from a previously established position.
- (Show difference in plan view below).
- Check here if additional information is shown on the reverse side of this form.

Describe record evidence, recovered physical evidence, occupational evidence, testimonial evidence and all other evidence considered in the recovery/restoration of the corner.

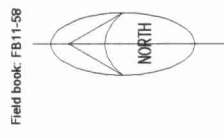
The original corner was established in 1853 by W. J. Neely. Original bearing trees: birch, 12", S8°W, 29 links; maple, 8", N47°W, 19 links; maple, 10", N44°E, 43 links and a maple, 12z', S12°E, 19 links. In 1980, Ed. Abendroth: "Found railroad spike at centerline intersection, presumed to be corner. Origin unknown". He measured ties but didn't indicate whether the ties were found or set. 06/17/09 D. Tlusty found RR spike in road, down 0.2'. Found Abendroth tie NW (ip w brass cap) leaning but firmly in ground. Found 2" ip SE, bent. Road is going to be paved in the near future. Added ties shown to save to location of the railroad spike found.

Physical description of the monument set:

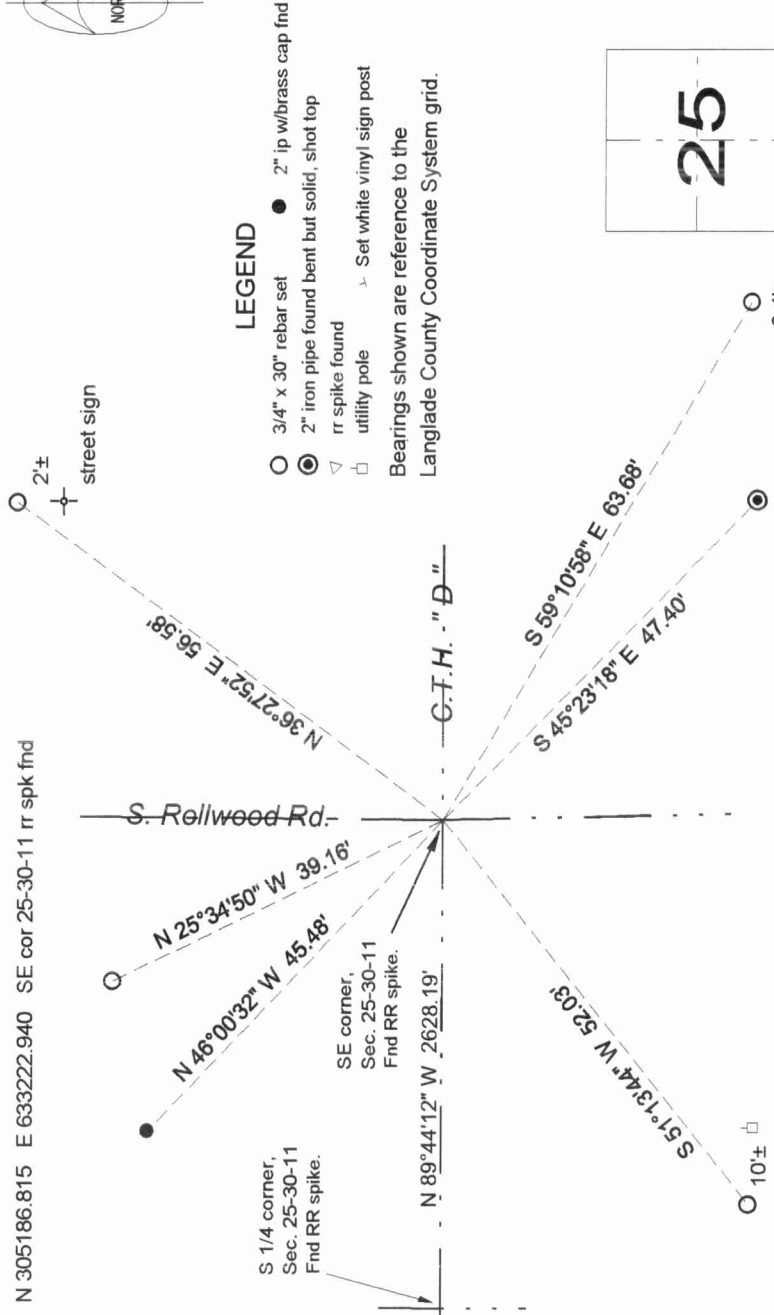
I left the existing railroad spike in place.

Describe the accessories used to perpetuate the corner. Include a plan view drawing and accessories found/set. Describe measuring point on bearing trees. Show any topographic features that would aid in future recovery of the corner.

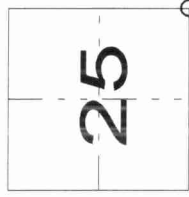
N 305186.815 E 633222.940 SE cor 25-30-11 rr spk fnd



Field book: FB11-58



- LEGEND**
- 3/4" x 30" rebar set
 - 2" iron pipe found bent but solid, shot top
 - rr spike found
 - utility pole
 - Set white vinyl sign post
- Bearings shown are reference to the
Langlade County Coordinate System grid.



O = corner perpetuated
The Southeast corner of Section 25, T. 30 N., R. 11 E., Langlade County, WI



I, David E. Tlusty, Registered Land Surveyor, as Langlade County Surveyor, certify that the corner location on this record was determined by me and that this U.S. Public Land Survey Monument Record is correct to the best of my knowledge and belief.