

LANGLADE COUNTY U.S. PUBLIC LAND CORNER RESTORATION

The East Quarter corner of Section 24, T. 30 N., R. 11 E., Langlade County, WI.

Corner was: (check all that apply)

- Restored through acceptance of an obliterated evidence location.
- Restored through acceptance of a found perpetuated location.
- Determined to be lost and re-established through proportionate methods.
- Show bearings and distances to PLSS corners used for proportioning, and show original distances).
- Restored/recovered/re-established in a location that differs from a previously established position.
- (Show difference in plan view below).

4301124 2000

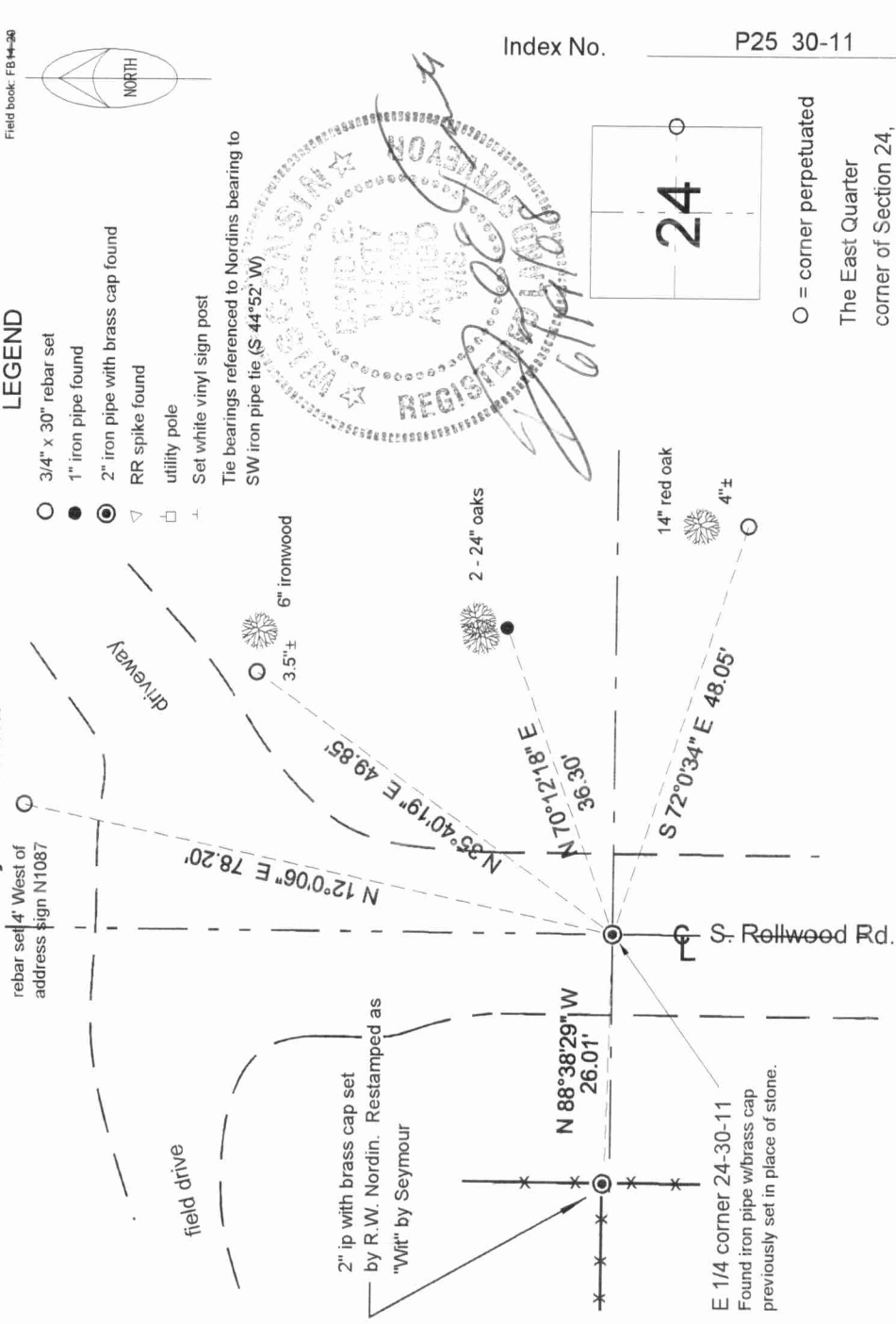
Describe record evidence, recovered physical evidence, occupational evidence, testimonial evidence and all other evidence considered in the recovery/restoration of the corner.

The original corner was established in 1853 by W. J. Neely. Original bearing trees: maple, 10", N78°W, 32 links and a hemlock, 12", S46°E, 21 links. In 1907, Brooks: "Set grey boulder 4 x 6 x 22 + on top" and he ran east from it, 78.15 ch (4959.9') to E 1/4 corner. In 1979, R.W. Nordin (RLS791): "Excavated for corner. Found evidence of decayed post at fence corner. Set a 2" x 36" iron pipe with brass cap for corner". In 1988, Marv Seymour, RLS1412, placed an iron pipe with brass cap in the road based on testimony of Edward Drab, who said a granite stone was set in the road in 1916. May, 2008, D. Tlusty, talked with Mr. Drab. He confirmed that he knew of a stone in the road that was the corner set by surveyors long ago. He didn't know if it was still there but he said "the DNR surveyor set it in the right place". 06/12/08 D/ Tlusty, Jason Thom, dug with backhoe in search of the stone. Removed Seymour monument. Found no stone. Accepted Seymours position, as recently confirmed by Edward Drab as the location of the previous stone and as the best evidence of the original corner location. The distance to the East 1/4 corner meas. by Seymour as 4959.51' agrees with Brooks' dist. of 4959.9'.

Physical description of the monument set:

I reset the Seymour monument, a 2" x 38" iron pipe with brass cap, in the road, as found, 1.2' below the gravel road surface.

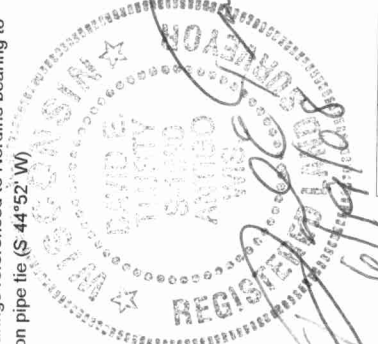
Describe the accessories used to perpetuate the corner. Include a plan view drawing and accessories found/set. Describe measuring point on bearing trees. Show any topographic features that would aid in future recovery of the corner.



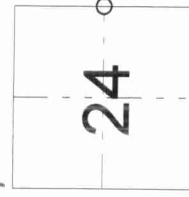
LEGEND

- 3/4" x 30" rebar set
- 1" iron pipe found
- ⊙ 2" iron pipe with brass cap found
- ▽ RR spike found
- utility pole
- ⊕ Set white vinyl sign post

The bearings referenced to Norddins bearing to SW iron pipe tie (S 44°52' W)



Index No.



P25 30-11

○ = corner perpetuated
The East Quarter corner of Section 24, T. 30 N., R. 11 E., Langlade County, WI

I, David E. Tlusty, Registered Land Surveyor, as Langlade County Surveyor, certify that the corner location on this record was determined by me and that this U.S. Public Land Survey Monument Record is correct to the best of my knowledge and belief.

West 1/4 corner, Sec 19, T30N, R12E

Langlade County Coordinates based on static GPS on traverse points near the corner.

FROM	BEARING/ANGLE	DISTANCE	TO	NORTH	EAST
1/4	x ip bc fnd, dug, reset		38	313066.6338	633137.4253