

4 3011 24 20 00

U.S. PUBLIC LAND SURVEY MONUMENT RECORD

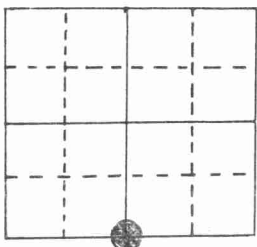
Note: This form is intended and designed to fulfill all requirements of Wisconsin Administrative Code, Chapter A-E 5.02, U.S. Public Land Survey Monument Record (3) (a) (b) (c) (d) (e) (f) (g) (h) (i). An additional sheet may be added if necessary to conform with said requirements.

(a) Corner location: Township 30 North

Range 12 East/West

Town/City/Village Norwood

County Langlade

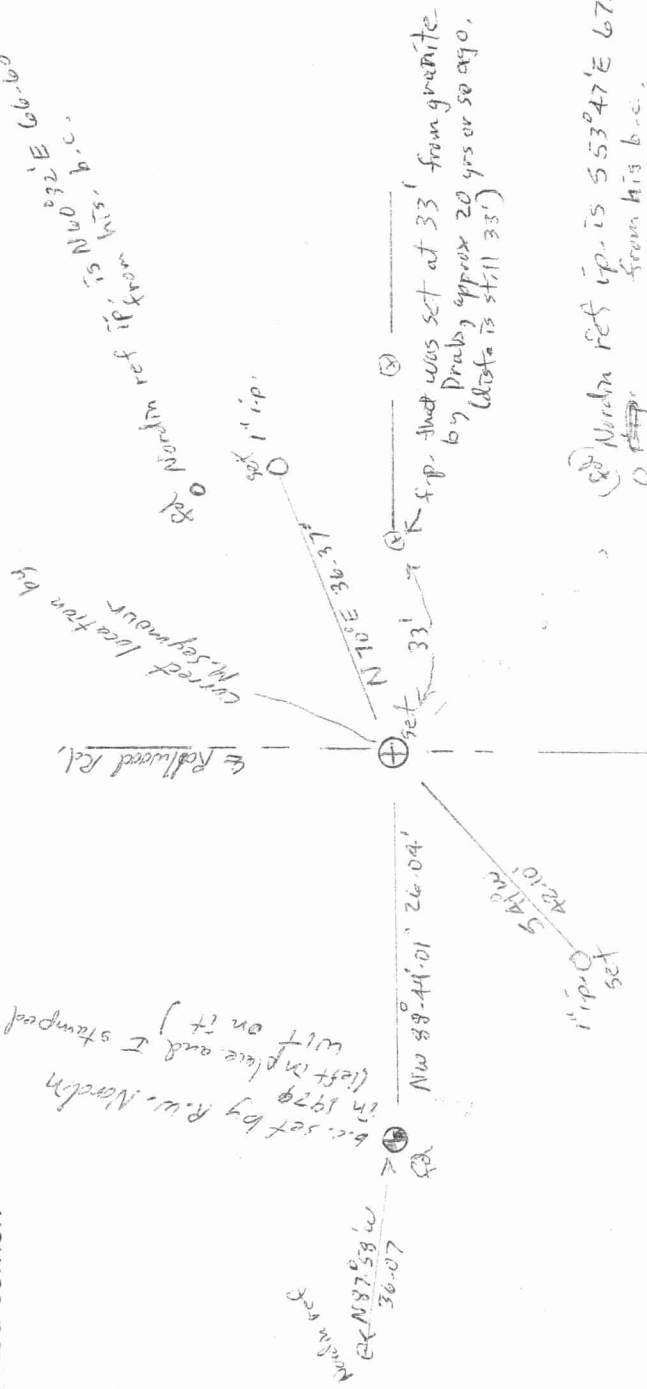


Section 19

(b) (f) (g) (h) Description of monument found at this corner and if it was accepted, state all evidence (material, testimonial, occupational, plats, records, other monuments) used as a basis for accepting. If not accepted or if nothing was found, state evidence used as basis for establishing location. If reestablished through lost corner proportionate methods, indicate all monuments, distances and directions used to establish.

Found b.c. by Nordman. Determined he found a fence post as the local land owner, Edward Drab, said a granite was set in E of road in 1916, by a surveyor. Nordman's b.c. has about a 1 1/2 degree angle at it. The point I established in E of road as shown by Drab fits almost exactly on line between NW + SW cors Sec. 19. (I found a very short ip. in E road which was mostly likely set by the grader operator when he realized he knocked out the corner. That operator died in the 70's. I set 2" ip. with b.c. in E.

(c) (d) (e) Plan view of corner with ties to at least 4 witness monuments. If in disagreement with previously established corner, show the distances between the two corners and also indicate the ties to the disputed corner.



(i) I, Marvin E. Seymour (type or print name) certify that the corner location on this record was determined by me or under my direction and control and that this U.S. Public Land Survey Monument Record is correct and complete to the best of my knowledge and belief.

Signature Marvin E. Seymour Date May 31, 1988

