

LANGLADE COUNTY U.S. PUBLIC LAND CORNER RESTORATION

The Southeast corner of Section 23, T. 30 N., R. 11 E., Langlade County, WI.

Corner was: (check all that apply)

- Restored through acceptance of an obliterated evidence location.
- Restored through acceptance of a found perpetuated location.
- Determined to be lost and re-established through proportionate methods.
- Show bearings and distances to PLSS corners used for proportioning, and show original distances).
- Restored/recovered/re-established in a location that differs from a previously established position.
- (Show difference in plan view below).
- Check here if additional information is shown on the reverse side of this form.

4 3011230000

Describe record evidence, recovered physical evidence, occupational evidence, testimonial evidence and all other evidence considered in the recovery/restoration of the corner.

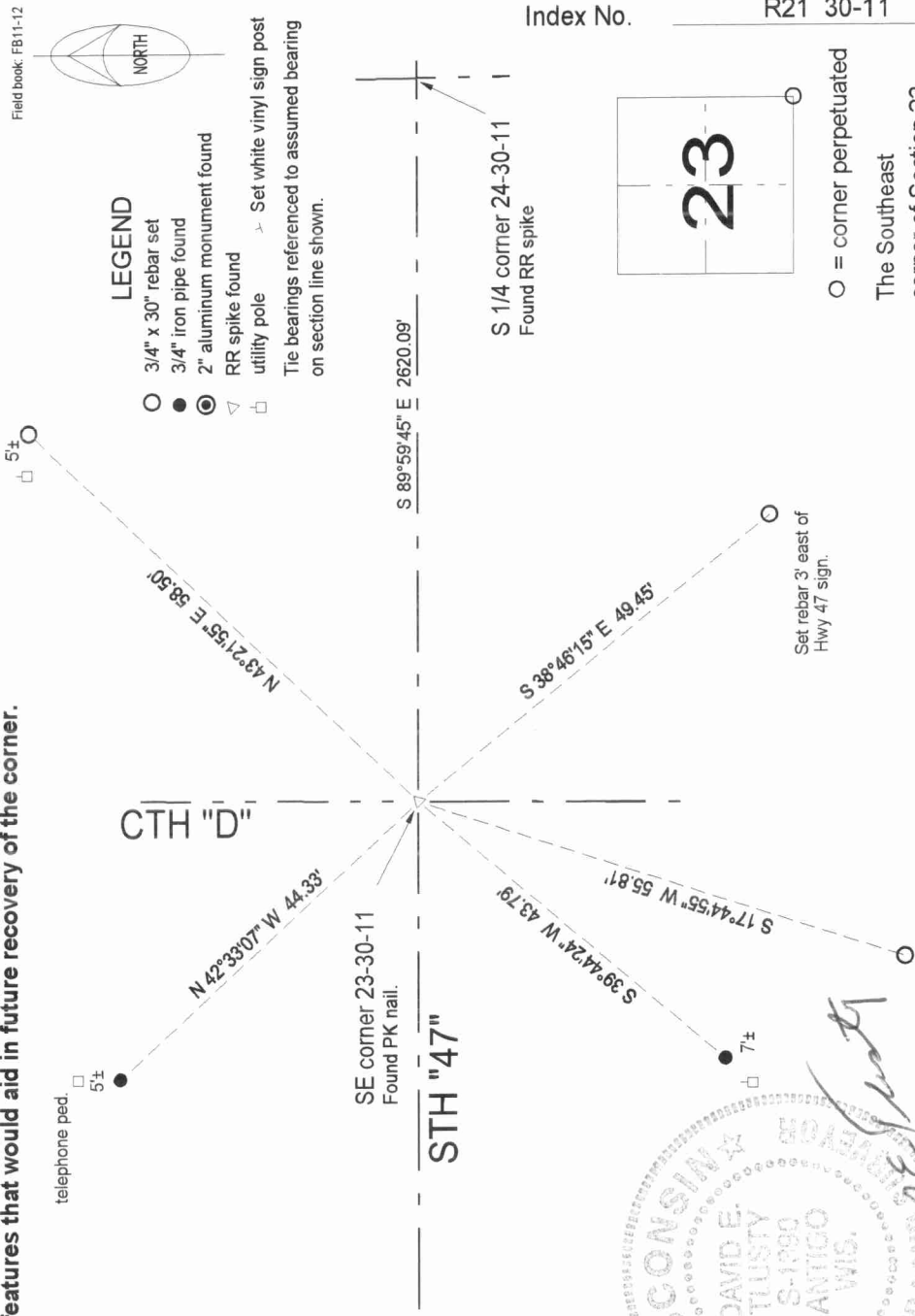
The original corner was established in 1853 by William T. Bradley. Original bearing trees: hemlock, 10", S72°E, 18 links, and a birch, 35", S81°W, 54 links.

Dorr, FB97-121, "set it from where witness's said birch BT stood". In 1990, former surveyor Kelly "found P.K. nail over iron at intersection of Hwy D & Hwy 47. Set 3" al. witness monument". Kelly also set 2 iron pipe ties and a PK in a power pole. 05/27/99 D. Tlusty, D. Williams found PK. To preserve location of PK, I measured the ties shown below.

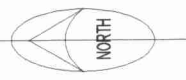
Physical description of the monument set:

Left existing PK in place.

Describe the accessories used to perpetuate the corner. Include a plan view drawing and accessories found/set. Describe measuring point on bearing trees. Show any topographic features that would aid in future recovery of the corner.



Field book: FB11-12



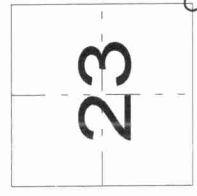
LEGEND

- 3/4" x 30" rebar set
 - 3/4" iron pipe found
 - ⊙ 2" aluminum monument found
 - ▽ RR spike found
 - utility pole
 - Set white vinyl sign post
- Tie bearings referenced to assumed bearing on section line shown.



I, David E. Tlusty, Registered Land Surveyor, as Langlade County Surveyor, certify that the corner location on this record was determined by me and that this U.S. Public Land Survey Monument Record is correct to the best of my knowledge and belief.

David E. Tlusty
3/28/02



○ = corner perpetuated

The Southeast corner of Section 23, T. 30 N., R. 11 E., Langlade County, WI

Index No. R21 30-11

S 1/4 corner 24-30-11
Found RR spike

SE corner 23-30-11
Found PK nail.

STH "47"

S 89°59'45" E 2620.09'

N 43°21'55" E 58.50'

N 42°33'7" W 44.33'

S 39°44'24" W 43.79'

S 17°44'55" W 55.81'

S 38°46'15" E 49.45'

Set rebar 3' east of Hwy 47 sign.