

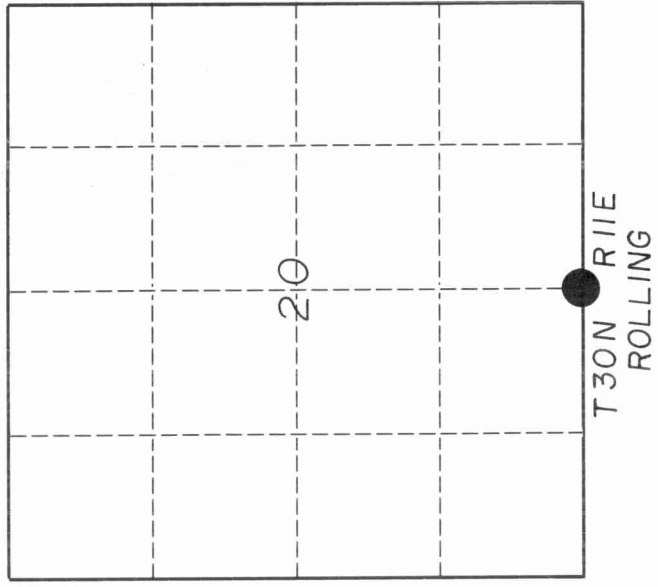
430120000

# U. S. PUBLIC LAND SURVEY MONUMENT RECORD

## INSTRUCTIONS:

This record shall show the location of the corner and shall include all of the following nine elements (a through i).

- (a) Identify the corner by reference to the U.S. public land survey system.
- O = Corner monument restored.

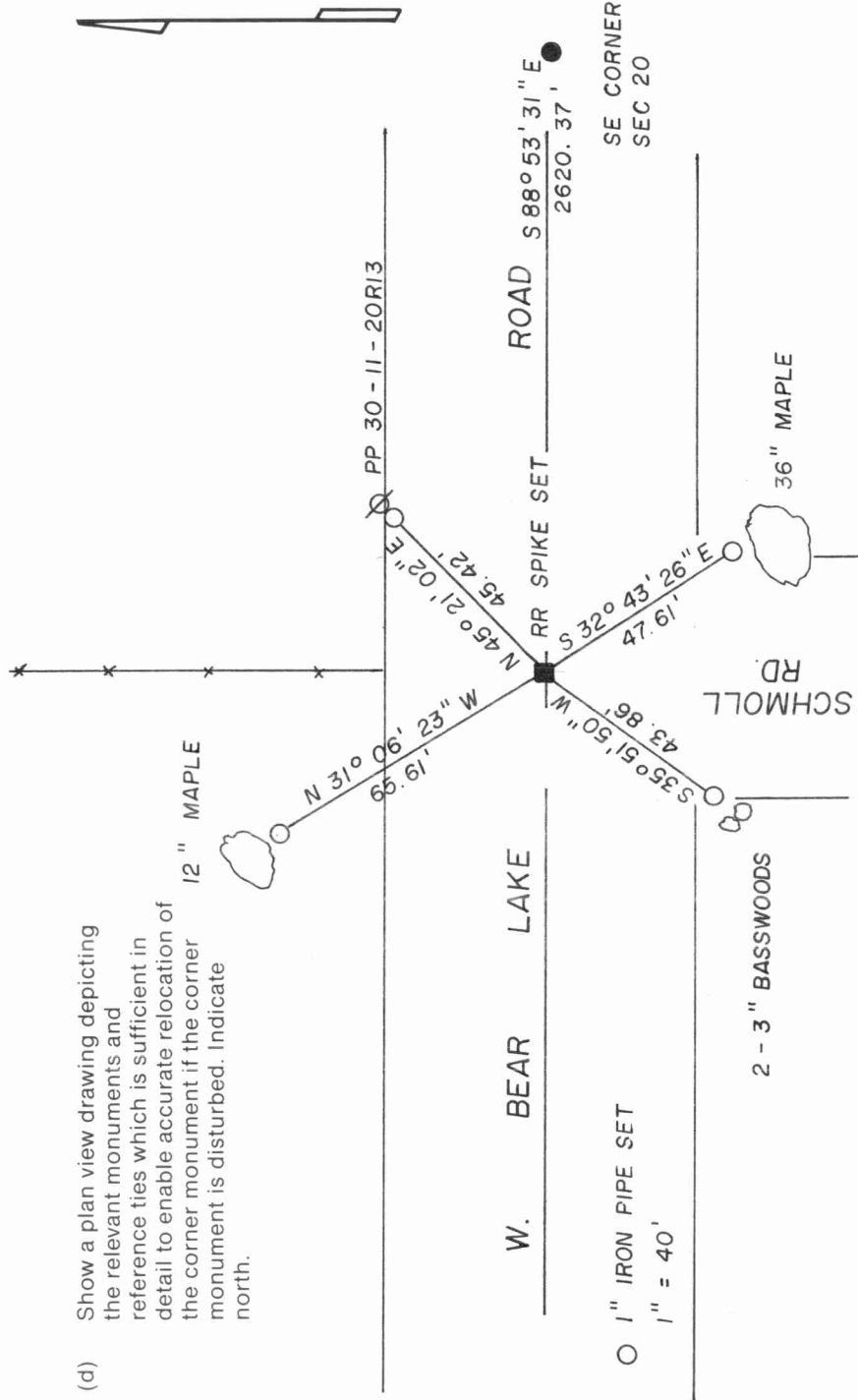


*ORIGINAL SURVEY COMPLETED  
BY WILLIAM BRADLEY.*

- (b) Describe any record evidence, monument evidence, occupational evidence, testimonial evidence or any other material evidence you considered, and whether the monument was found or placed.

*PLACED RR SPIKE AT OCCUPIED CORNER. PAROLE EVIDENCE OF TWO CONCURRING SOURCES STATED THAT WHEN THE ROAD (W. BEAR LAKE) WAS RECONSTRUCTED MANY STONES WERE REMOVED AND EXISTING ROADBED WAS GREATLY DISTURBED. IN LOOKING AT AREA, MANY STONES EXIST ON ADJACENT FIELDS. CORNER WAS NOT DUG.*

- (c) In the plan view drawing below, provide reference ties to at least 4 witness monuments, or, if the location is within a municipality, to at least 2 witness monuments. (Witness monuments shall be made of concrete, natural stone, iron or other equally durable material.) Describe witness monuments.



R7

Describe any material discrepancy between the location of the corner as restored or reestablished and the location of that corner as previously restored or reestablished by distance and direction. Show the discrepancy on the plan view drawing under (d), above. Show the distances between the corner as previously restored or reestablished and (1) the corner as restored or reestablished, and (2) to at least 2 of the witness monuments shown on the drawing in (d), above.

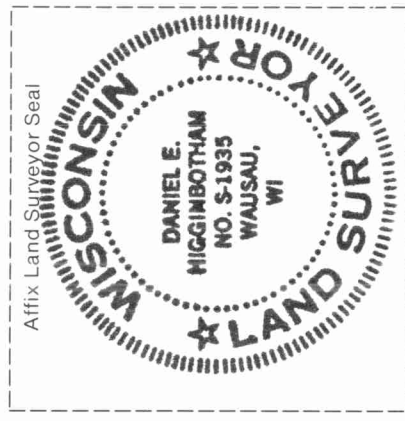
NONE

(f) Was the corner restored through acceptance of (1) an obliterated evidence location, or, (2) a found perpetuated location.?

(1) IT WAS FELT THAT SUCH PREVIOUS DISTURBANCE HAD OCCURRED  
AS TO MAKE IT UNNECESSARY TO DIG. ACCEPTED OCCUPATION AS  
BEST EVIDENCE OF CORNER LOCATION.

(g & h) Was the corner reestablished through lost corner proportionate methods? If so, show the method, including the directions and distances to other public land survey corners used as evidence or used for proportioning in determining the corner location.

NO.



(i) I, DANIEL E. HIGGINBOTHAM RLS 1935  
(type or print name)

certify that the corner location shown on this record was determined by me or under my direction and control and that this U.S. Public Land Survey Monument Record is correct and complete to the best of my knowledge and belief.

Signature

5-29-92

Date