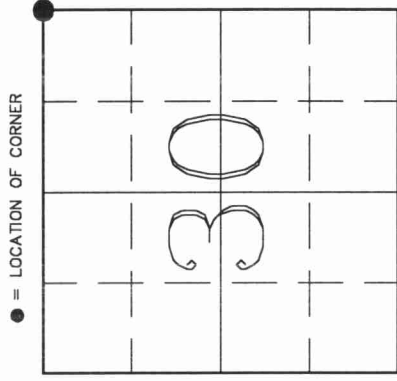


# U.S. PUBLIC LAND SURVEY MONUMENT RECORD

**HISTORY OF ORIGINAL CORNER ESTABLISHMENT AND SUBSEQUENT RESTORATION AND DESCRIPTION OF ANY RECORD, MONUMENT OCCUPATIONAL, TESTIMONIAL OR OTHER EVIDENCE CONSIDERED:**

The Original Corner was established in 1853 by William T. Bradley. Original Bearing Trees: Elm 14" S38W 14lks., Elm 15" S37E 34lks. On June 26, 2000, Dan Higginbotham and Gerry Bahar searched for evidence of the corner at the intersection of Carley Rd and W Bear Lake Rd and found nothing. We prorated the location of the NE Cor from original gov't distances from the N 1/4 Cor of Sec 30 and the N 1/4 Cor of Sec 29 to arrive at the East-West position. This places the location of the Corner 7.00' West of CenterLine of Carley Rd. We placed the North-South location on CenterLine of W Bear Lake Rd. and tied out.



43011190000

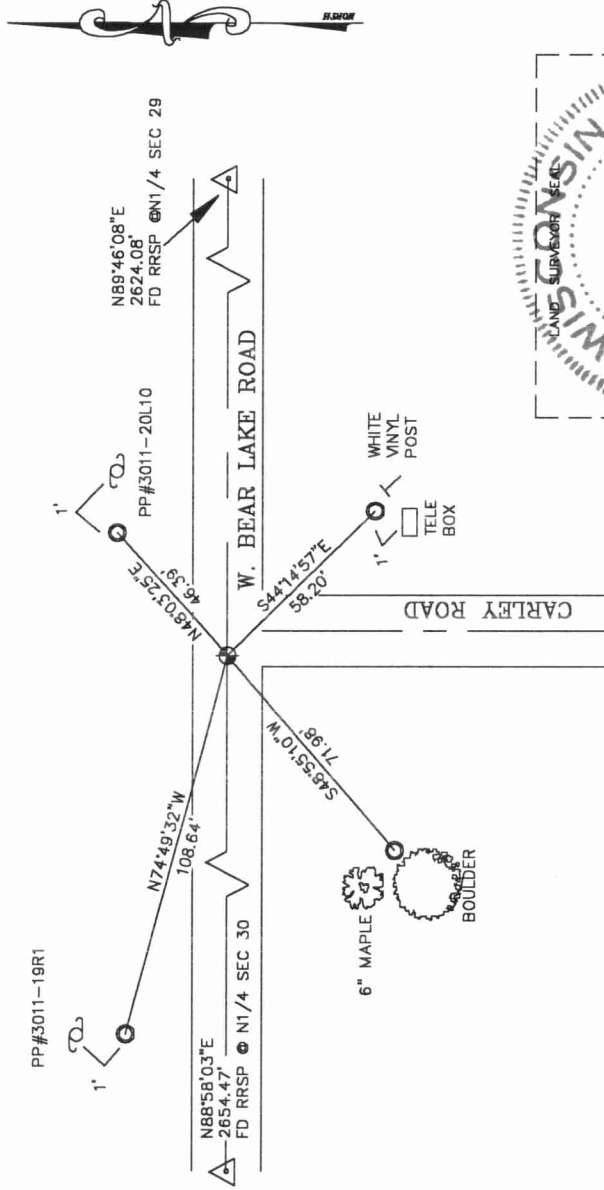
SECTION 30  
 TOWNSHIP 30 NORTH, RANGE 11 EAST  
 TOWN OF ROLLING  
 LANGLADE                      COUNTY, WISCONSIN

**CORNER WAS: (CHECK ALL THAT APPLY)**

- RESTORED THROUGH ACCEPTANCE OF AN OBLITERATED EVIDENCE LOCATION
- RESTORED THROUGH ACCEPTANCE OF A FOUND PERPETUATED LOCATION
- CONSIDERED A LOST CORNER AND REESTABLISHED THROUGH LOST CORNER PROPORTIONATE METHODS (INCLUDE A PLAN VIEW DRAWING SHOWING DISTANCES AND DIRECTIONS TO OTHER PUBLIC LAND SURVEY CORNERS USED FOR PROPORTIONING AND DETERMINING THE CORNER LOCATION)
- RESTORED OR REESTABLISHED IN A LOCATION THAT DIFFERS FROM A PREVIOUS RESTORATION OR REESTABLISHMENT (INCLUDE A PLAN VIEW DRAWING AND INDICATE WHAT WAS SET AND/OR FOUND)
- CHECK IF THERE IS ADDITIONAL INFORMATION ON BACK

**DESCRIBE THE MONUMENT AND ACCESSORIES USED TO PERPETUATE THE LOCATION OF THE CORNER. (INCLUDE A PLAN VIEW DRAWING AND INDICATE WHAT WAS SET AND/OR FOUND) ALSO INCLUDE FOUR TIES TO THE SECTION CORNER AND DESCRIPTION OF THE TIES.**

- SET 4 1/2" GEAR HEADED SPIKE
- CORNER LOCATION
- SET 3/4" X 30" REBAR TIES



**DANIEL E. HIGGINBOTHAM**

(Type or print name) CERTIFY THAT THE CORNER LOCATION SHOWN ON THIS RECORD WAS DETERMINED BY ME OR UNDER MY DIRECTION AND CONTROL AND THAT THIS U.S. PUBLIC LAND SURVEY MONUMENT RECORD IS CORRECT AND COMPLETE TO THE BEST OF MY KNOWLEDGE AND BELIEF.

SIGNATURE *Daniel E. Higginbotham*

DATE 8/22/00



INDEX NO. R5