

CERTIFIED LAND CORNER RESTORATION

Index No. N-3

State of Wisconsin }  
 County of LANGLADE } ss.

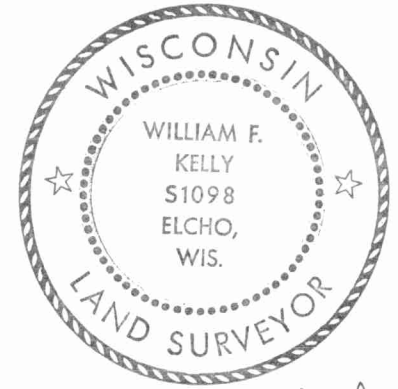
I WILLIAM F. KELLY, do hereby certify that on the 19<sup>th</sup> day of NOVEMBER, 1982, I found evidence of the S. 1/4 corner of SECT. 18 Township 30, North, Range 11 EAST, Fourth Principal Meridian, as described hereon; and that from this evidence I established a new monument and accessories as described hereon to perpetuate the original location of this corner.

Resident witnesses:

History of original corner establishment:  
ORIGINAL CORNER ESTABLISHED BY WILLIAM T. BRADLEY IN OCT., 1853

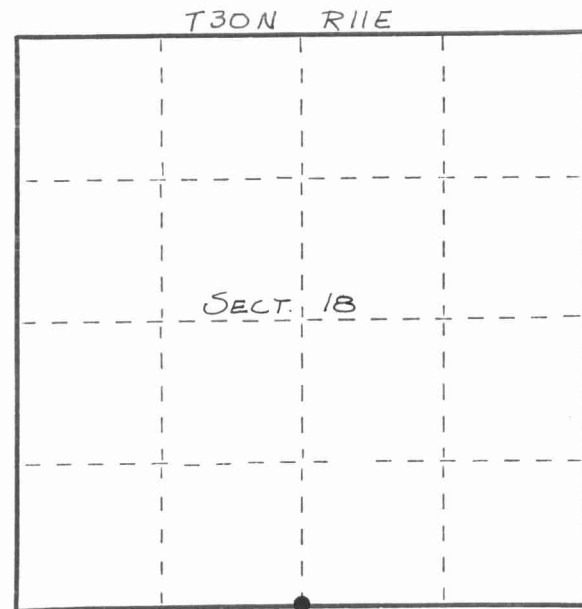
Description of corner evidence found:

NO EVIDENCE OF DORR'S OR HUTCHISON'S RETRACEMENT OF THE ORIGINAL CORNER FOUND. FENCE LINE INTERSECTION IDENTIFIED AS CORNER LOCATION BY OCCUPATION.

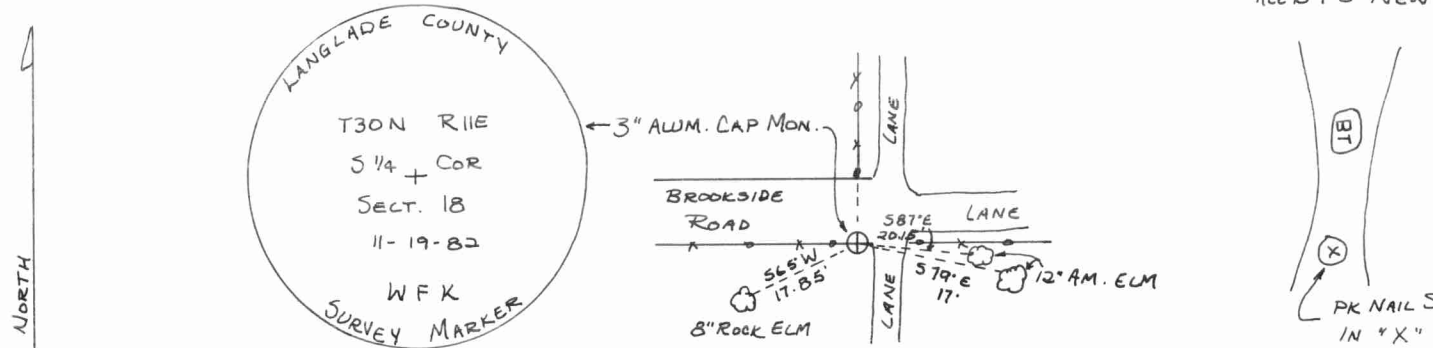


*William F. Kelly*

Description of monument and accessories I established to perpetuate the original location of this corner.



○ = Corner monument restored.



Dated at ELCHO, Wis., this 19<sup>th</sup> day of NOVEMBER, 1982

Signature William F. Kelly Title COUNTY SURVEYOR Registration No. 1098  
 (County Surveyor, Registered Land Surveyor, or other duly authorized official)

Office of Register of Deeds, County of \_\_\_\_\_, I hereby certify that the within instrument was filed in this office for record on the \_\_\_\_\_ day of \_\_\_\_\_, 19\_\_\_\_ at \_\_\_\_\_ o'clock \_\_\_\_\_ M.

(Register of Deeds)

By \_\_\_\_\_ Deputy

FORM 985 H. C. MILLER CO., MILWAUKEE 4301180020