

CERTIFIED LAND CORNER RESTORATION

Index No. K-13

State of Wisconsin }  
 County of Langlade } ss.

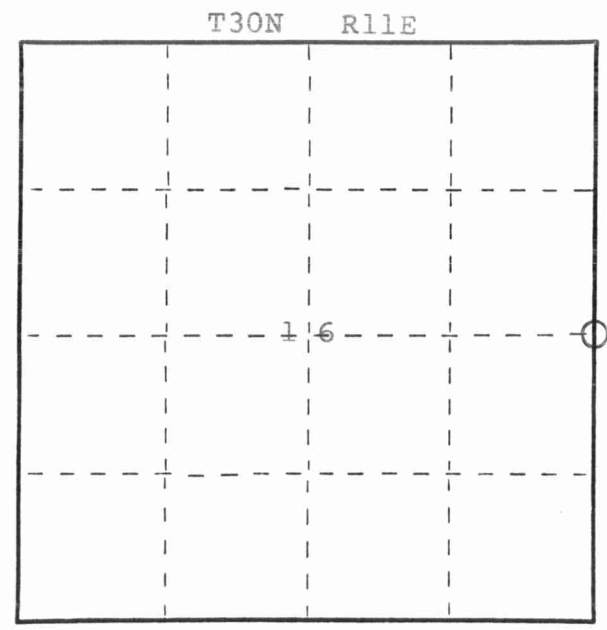
I Mark A. Stibbe, do hereby certify that on the 7th day of July, 1982, I found evidence of the East 1/4 corner of Section 16 Township 30, North, Range 11 East, Fourth Principal Meridian, as described hereon; and that from this evidence I established a new monument and accessories as described hereon to perpetuate the original location of this corner.

Resident witnesses:

.....  
 .....  
 .....

FORM 985 H. C. MILLER CO., MILWAUKEE

430116 2000



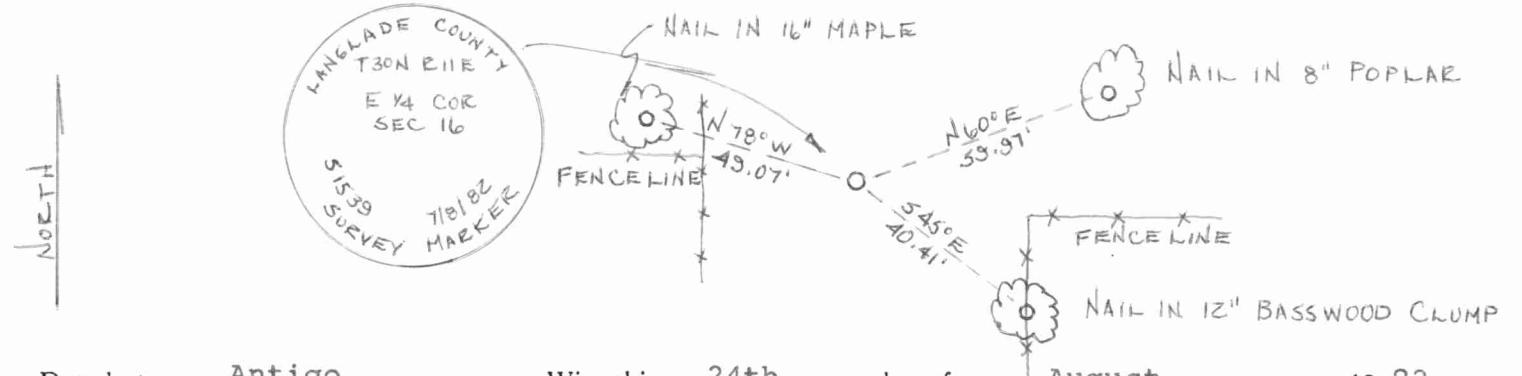
○ = Corner monument restored.

History of original corner establishment:  
 Post set by William Bradley in October, 1853.

Description of corner evidence found:  
 Found no evidence of existing monument. Set 2 1/4" (outside diameter) x 42" aluminum pipe with cap stamped as shown below. Pipe set at intersection of fence lines with centerline of pavement.



Description of monument and accessories I established to perpetuate the original location of this corner.



Dated at Antigo, Wis., this 24th day of August, 1982.

Signature Mark A. Stibbe Title Reg. Land Surveyor Registration No. 1539  
 (County Surveyor, Registered Land Surveyor, or other duly authorized official)

Office of Register of Deeds, County of....., I hereby certify that the within instrument was filed in this office for record on the.....day of....., 19..... at.....o'clock..... M.

.....  
 (Register of Deeds)  
 By.....Deputy