

LANGLADE COUNTY U.S. PUBLIC LAND CORNER RESTORATION

The East quarter corner of Section 14, T. 30 N., R. 11 E., Langlade County, WI.

2000
4301114 0020

Corner was: (check all that apply)

- Restored through acceptance of an obliterated evidence location.
- Restored through acceptance of a found perpetuated location.
- Determined to be lost and re-established through proportionate methods.
- Show bearings and distances to PLSS corners used for proportioning, and show original distances).
- Restored/recovered/re-established in a location that differs from a previously established position.
- (Show difference in plan view below).
- Check here if additional information is shown on the reverse side of this form.

Describe record evidence, recovered physical evidence, occupational evidence, testimonial evidence and all other evidence considered in the recovery/restoration of the corner.

The original corner was established in 1853 by William T. Bradley. Original bearing trees: birch, 15", S47°W, 39 links and a maple, 10", S35°E, 38 links. On 06/17/1917 Webley, in FB101-65, described the corner as a light grey boulder, 12 x 16 x 26 with + on top. In 1990, former surveyor Kelly "found R/R spike in CL of Hwy D. Set 3" al. witness monument west of corner." He also set 3 - 1" ip for reference monuments. 06/28/07 D. Tlusty found a railroad spike in the road, found 3 iron pipe ties by Kelly but the alum. monument west of corner is missing. 07/17/07 D. Tlusty, J. Thom, dug with backhoe. At 18" down, found stone with a clear cut + on top as described by Webley. Accepted the marked stone found as the best evidence of the corner. Measured new tie as shown below.

Physical description of the monument set:

No surface mark set - road is to be paved in the near future.
I set a 1" x 18" iron pipe at the south edge of the stone found.

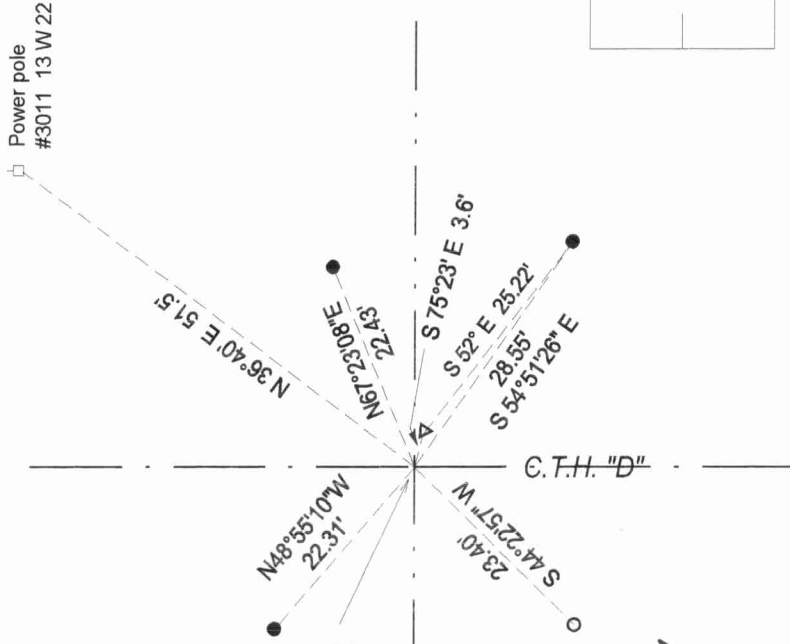
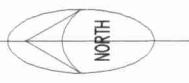
Describe the accessories used to perpetuate the corner. Include a plan view drawing and accessories found/set. Describe measuring point on bearing trees. Show any topographic features that would aid in future recovery of the corner.

LEGEND

- 3/4" iron pipe found
- 3/4" x 30" rebar set
- utility pole
- + Set white vinyl sign post
- ▽ RR spike found - Kellys.

The bearings referenced to the bearing of S 52° E which is from Kellys RR spike, to his SE iron pipe set, as shown on his tie sheet.

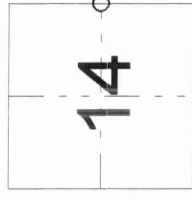
Field book, FB10-72



East 1/4 corner,
Section 14-30-11
Found stone with "+"



Index No. L 21 30-11



○ = corner perpetuated
The East quarter corner of Section 14, T. 30 N., R. 11 E., Langlade County, WI

I, David E. Tlusty, Registered Land Surveyor, as Langlade County Surveyor, certify that the corner location on this record was determined by me and that this U.S. Public Land Survey Monument Record is correct to the best of my knowledge and belief.