

LANGLADE COUNTY U.S. PUBLIC LAND CORNER RESTORATION

The Southeast corner of Section 14, T. 30 N., R. 11 E., Langlade County, WI.

Corner was: (check all that apply)

4301114 0000

- Restored through acceptance of an obliterated evidence location.
- Restored through acceptance of a found perpetuated location.
- Determined to be lost and re-established through proportionate methods.
- Show bearings and distances to PLSS corners used for proportioning, and show original distances).
- Restored/recovered/re-established in a location that differs from a previously established position.
- (Show difference in plan view below).
- Check here if additional information is shown on the reverse side of this form.

Describe record evidence, recovered physical evidence, occupational evidence, testimonial evidence and all other evidence considered in the recovery/restoration of the corner.

The original corner was established in 1853 by William T. Bradley. Original bearing trees: elm, 12", S55°W, 25 links and a maple, 14", N65°E, 29 links. On 06/29/1917 Webley, in FB101-66, described the corner as a dark grey stone, 10 x 10 x 32 with + on top. In 1994, surveyor Tom Arnott "Used fence line and the CL of C.T.H. "D" and the centerline of Elbow Road leading east as the best possible location. Set 1" iron pipe in center of C.T.H. "D"." 07/18/07 D. Tlusty, J. Thom, dug with backhoe. At 18" down, found stone as described by Webley. Accepted the stone found as the best evidence of the corner. Iron pipe of Tom Arnotts is N 11°23' E, 1.09' from stone found.

Physical description of the monument set:

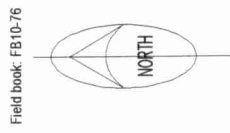
No surface mark set - road is to be paved in the near future.
I set a 1" x 18" iron pipe at the north edge of the stone found.

Describe the accessories used to perpetuate the corner. Include a plan view drawing and accessories found/set. Describe measuring point on bearing trees. Show any topographic features that would aid in future recovery of the corner.

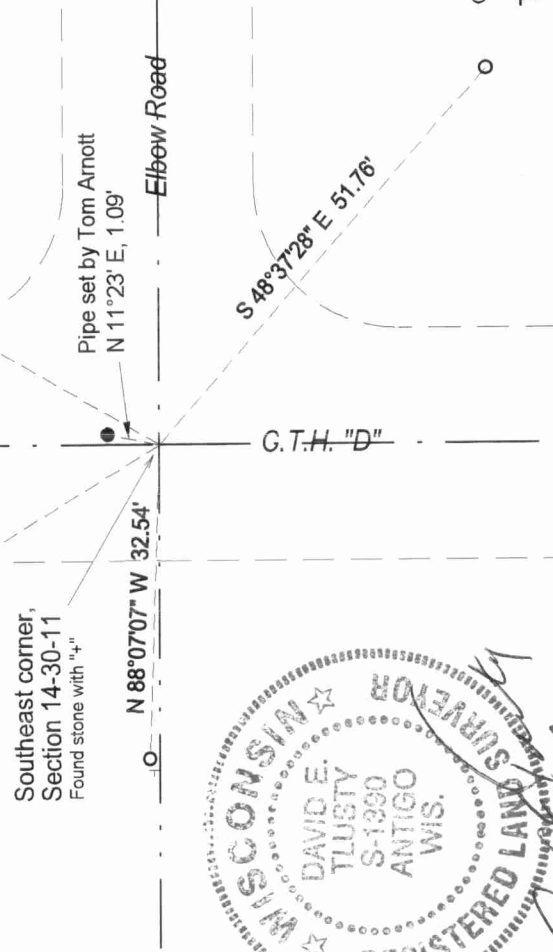
LEGEND

- 1" iron pipe found Arnott
- 3/4" rebar found
- utility pole
- + Found white vinyl sign post
- ▽ RR spike found - Kellys.

Tie bearings are referenced to a magnetic bearing with a hand compass in the vicinity of the corner.



Field book: FB10-76



I, David E. Tlusty, Registered Land Surveyor, as Langlade County Surveyor, certify that the corner location on this record was determined by me and that this U.S. Public Land Survey Monument Record is correct to the best of my knowledge and belief.

Index No. N 21 30-11

○ = corner perpetuated
The Southeast corner of Section 14, T. 30 N., R. 11 E., Langlade County, WI