

U.S. PUBLIC LAND SURVEY MONUMENT RECORD

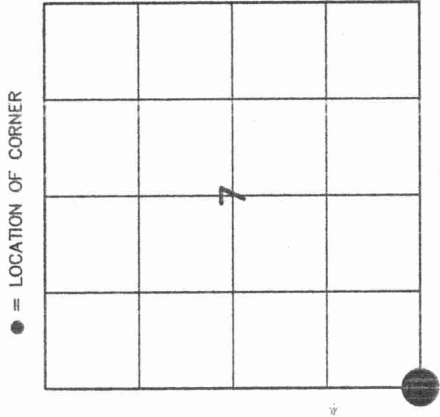
430112 0000

HISTORY OF ORIGINAL CORNER ESTABLISHMENT AND SUBSEQUENT RESTORATION AND DESCRIPTION OF ANY RECORD, MONUMENT OCCUPATIONAL, TESTIMONIAL OR OTHER EVIDENCE CONSIDERED:

THE ORIGINAL CORNER WAS SET BY WILLIAM NEELY IN 1853 THE ORIGINAL BEARING TREES WERE

- 7" IRONWOOD S36°W - 42 LKS
- 14" MAPLE N57°W - 20 LKS
- 12" MAPLE N79°E - 18 LKS
- 8" BALSAM S50°E - 24 LKS

TRADEWELL FOUND A 2" WELL POINT AND REPLACED IT WITH A 1" IRON PIPE. WE FOUND A PK NAIL THAT MATCHED ONE OF TRADEWELL'S TIES. THE OTHER TRADEWELL TIES WERE DESTROYED. ACCEPTED LOCATION AS THE CORNER AND PLACE 3/4" X 30" RE-BARS AS TIES



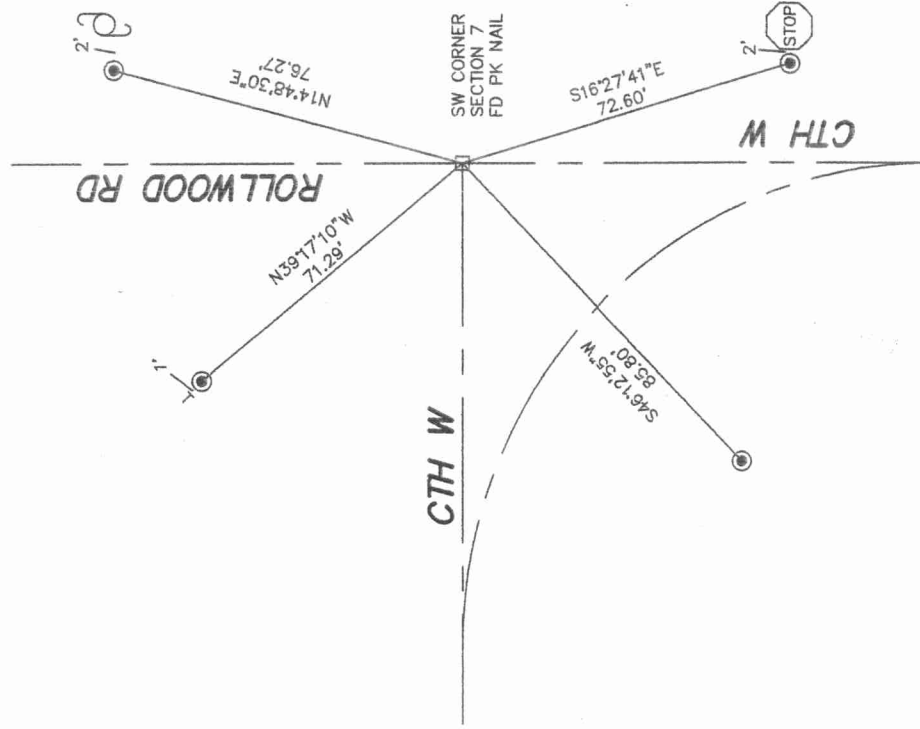
● = LOCATION OF CORNER

SECTION 7
TOWNSHIP 30 NORTH, RANGE 12 EAST
TOWN OF NORWOOD
LANGLADE COUNTY, WISCONSIN

CORNER WAS: (CHECK ALL THAT APPLY)

- RESTORED THROUGH ACCEPTANCE OF AN OBLITERATED EVIDENCE LOCATION
- RESTORED THROUGH ACCEPTANCE OF A FOUND PERPETUATED LOCATION
- CONSIDERED A LOST CORNER AND REESTABLISHED THROUGH LOST CORNER PROPORTIONATE METHODS (INCLUDE A PLAN VIEW DRAWING SHOWING DISTANCES AND DIRECTIONS TO OTHER PUBLIC LAND SURVEY CORNERS USED FOR PROPORTIONING AND DETERMINING THE CORNER LOCATION)
- RESTORED OR REESTABLISHED IN A LOCATION THAT DIFFERS FROM A PREVIOUS RESTORATION OR REESTABLISHMENT (INCLUDE A PLAN VIEW DRAWING AND INDICATE WHAT WAS SET AND/OR FOUND)
- CHECK IF THERE IS ADDITIONAL INFORMATION ON BACK

DESCRIBE THE MONUMENT AND ACCESSORIES USED TO PERPETUATE THE LOCATION OF THE CORNER. (INCLUDE A PLAN VIEW DRAWING AND INDICATE WHAT WAS SET AND/OR FOUND) ALSO INCLUDE FOUR TIES TO THE SECTION CORNER AND DESCRIPTION OF THE TIES.



SET 3/4" X 30" RE-BARS AT ALL TIE LOCATIONS



CHARLEY G. BRINKMEIER

(Type or Print Name) CERTIFY THAT THE CORNER LOCATION SHOWN ON THIS RECORD WAS DETERMINED BY ME OR UNDER MY DIRECTION AND CONTROL AND THAT THIS U.S. PUBLIC LAND SURVEY MONUMENT RECORD IS CORRECT AND COMPLETE TO THE BEST OF MY KNOWLEDGE AND BELIEF.

Charley Brinkmeier
SIGNATURE

7-26-05
DATE



J1 30-12

INDEX NO.