

CERTIFIED LAND CORNER RESTORATION

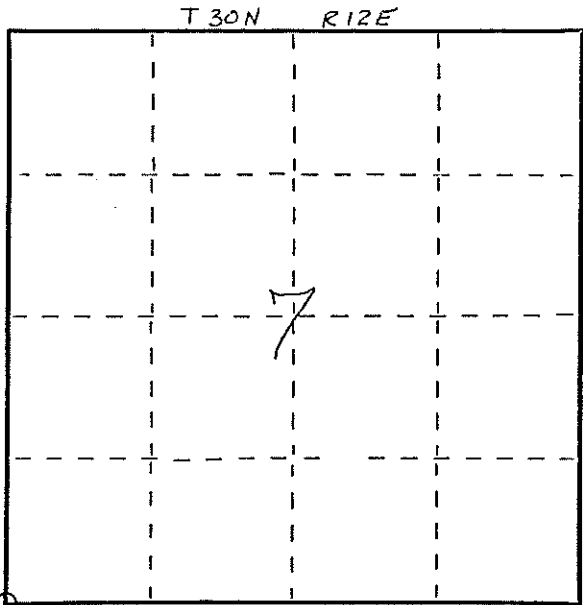
Index No. J-25  
30-11

State of Wisconsin }  
County of LANGLADE } ss.

I WESLEY J. TRADEWELL, do hereby certify that on the 14<sup>th</sup> day of NOVEMBER, 1978, I found evidence of the SOUTH WEST corner of SECTION 7 Township 30, North, Range 12 EAST, Fourth Principal Meridian, as described hereon; and that from this evidence I established a new monument and accessories as described hereon to perpetuate the original location of this corner.

Resident witnesses:

.....  
.....  
.....



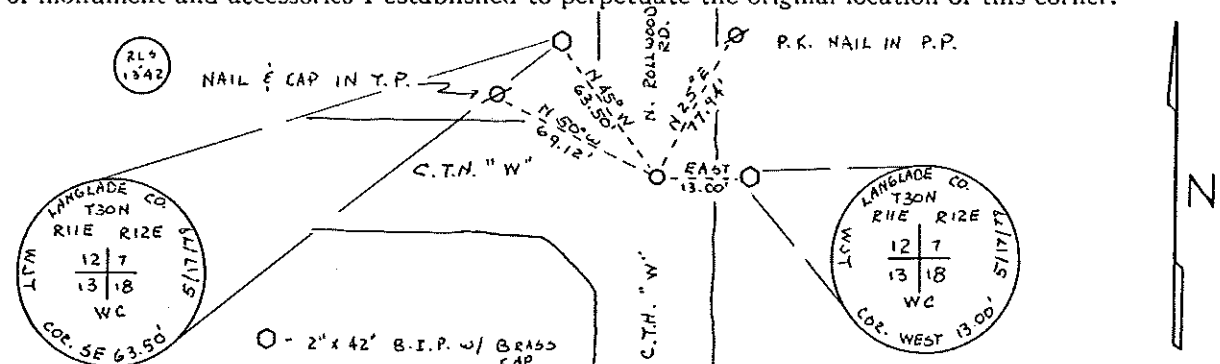
○ = Corner monument restored.

History of original corner establishment:

Description of corner evidence found:

FOUND 2" x 12" WELL POINT, POINT LEANING TO THE SOUTH. REPLACED POINT WITH 1" x 30" GALVANIZED IRON PIPE. PIPE IS LEANING SLIGHTLY TO WEST BECAUSE OF LARGE STONE 18" BELOW ROAD SURFACE. PIPE IS 3" BELOW ROAD SURFACE, TOP OF PIPE IS CORNER.

Description of monument and accessories I established to perpetuate the original location of this corner.



Dated at ANTIGO, Wis., this 21<sup>ST</sup> day of MAY, 1979.

Signature Wesley J. Tradewell Title REGISTERED LAND SURVEYOR Registration No. 1342  
(County Surveyor, Registered Land Surveyor, or other duly authorized official)

Office of Register of Deeds, County of....., I hereby certify that the within instrument was filed in this office for record on the..... day of....., 19..... at..... o'clock..... M.

.....  
(Register of Deeds)  
By..... Deputy

43011120000

FORM 985 R. C. MILLER CO., MILWAUKEE

