

LANGLADE COUNTY U.S. PUBLIC LAND CORNER RESTORATION

The South quarter corner of Section 11, T. 30 N., R. 11 E., Langlade County, WI.

Corner was: (check all that apply)

- Restored through acceptance of an obliterated evidence location.
- Restored through acceptance of a found perpetuated location.
- Determined to be lost and re-established through proportionate methods.
- Show bearings and distances to PLSS corners used for proportioning, and show original distances).
- Restored/recovered/re-established in a location that differs from a previously established position.
- (Show difference in plan view below).
- Check here if additional information is shown on the reverse side of this form.

4301111 0020

Describe record evidence, recovered physical evidence, occupational evidence, testimonial evidence and all other evidence considered in the recovery/restoration of the corner.

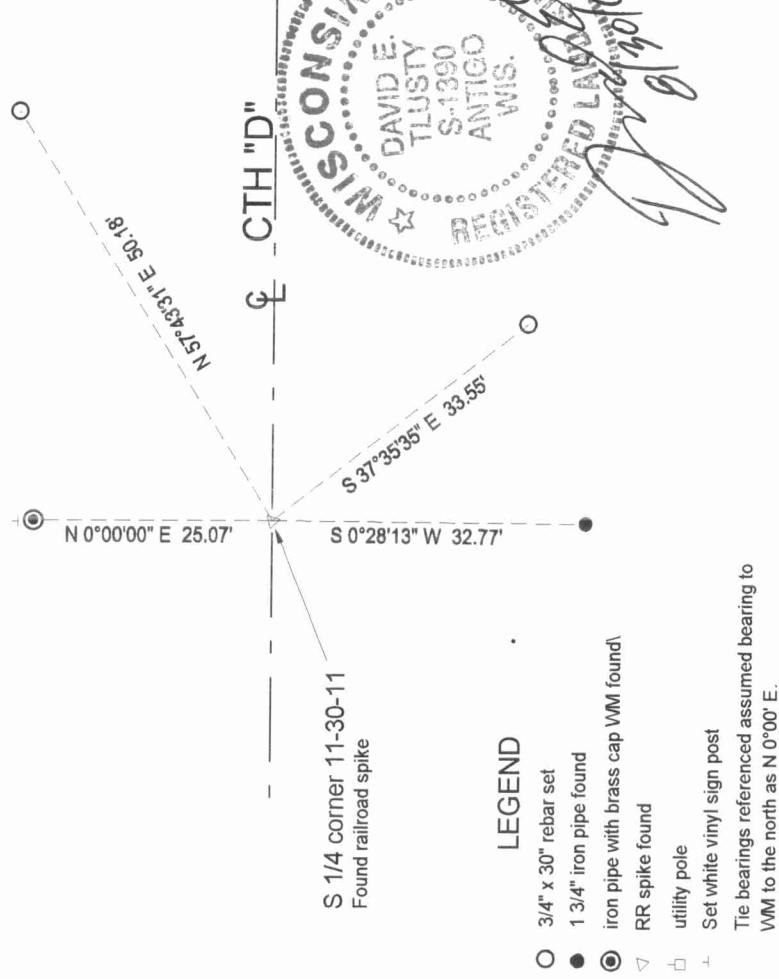
The original corner was established in 1853 by William T. Bradley. Original bearing trees: maple, 17", S40°E, 24 links and an elm, 14", N11°W, 32 links. On 06/17/1917, Webley, FB101-65, described the corner as a dark grey boulder, 12 x 14 x 20 + on top. In 1978, Radtke found a railroad spike at the center of Hwy D in line with a fence to the South. 06/28/07 D. Tlusty found railroad spike and measured existing ties and set new as shown below. 07/18/07 D. Tlusty, J. Thom dug with backhoe. Did not find the stone mentioned by Webley. Accepted the RR spike found as the best evidence of the corner location.

Physical description of the monument set:

07/24/07 set 60d new in temporary road patch. Road is to be paved in the near future.

Describe the accessories used to perpetuate the corner. Include a plan view drawing and accessories found/set. Describe measuring point on bearing trees. Show any topographic features that would aid in future recovery of the corner.

Field book: FB10-70

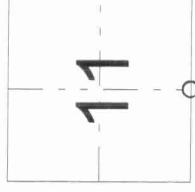


LEGEND

- 3/4" x 30" rebar set
- 1 3/4" iron pipe found
- iron pipe with brass cap WM found
- RR spike found
- utility pole
- Set white vinyl sign post

Tie bearings referenced assumed bearing to WM to the north as N 0°00' E.

Index No. J - 19 30-11



○ = corner perpetuated

The South Quarter
corner of Section 11,
T. 30 N., R. 11 E.,
Langlade County, WI

I, David E. Tlusty, Registered Land Surveyor, as Langlade County Surveyor, certify that the corner location on this record was determined by me and that this U.S. Public Land Survey Monument Record is correct to the best of my knowledge and belief.

