

4301110 0000 2013

U.S. PUBLIC LAND SURVEY MONUMENT RECORD

(Prepared and as required by S. A-E 7.08 WI Administrative Code)

The **NORTHEAST** corner of Section 15 , T. 30 N., R. 11 E., Langlade County, WI
Corner was (check all that apply)

- Restored through acceptance of an obliterated evidence location.
- Restored through acceptance of a found perpetuated location.
- Determined to be lost and re-established through proportionate methods. (show bearings and distances to PLSS corners used for proportioning.)
- Restored/recovered/re-established in a location that differs from a previously established position. (Show difference in plan view below.)
- Check here if additional information is shown on the reverse side of this form.

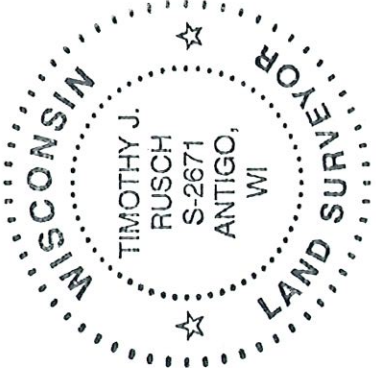
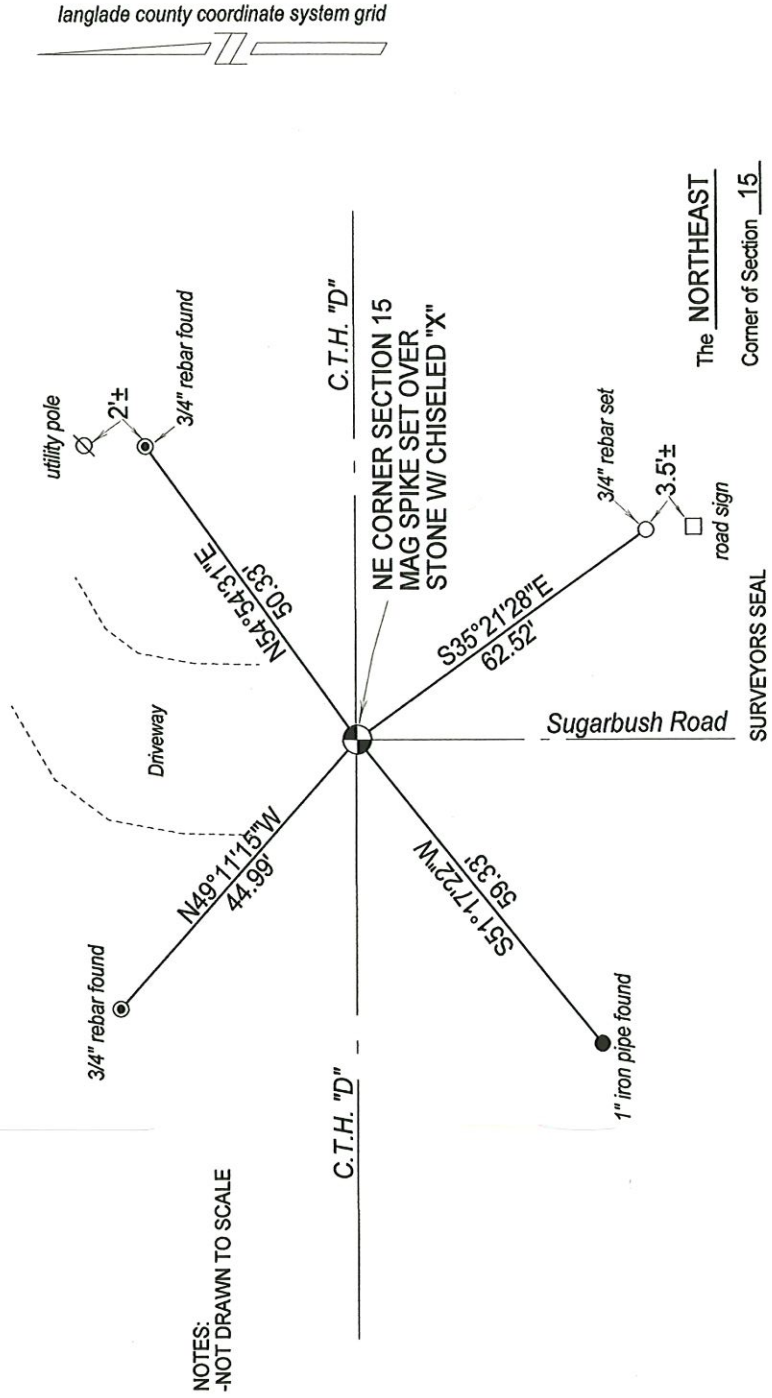
Describe record evidence, recovered physical evidence, occupational evidence, testimonial evidence, and all other evidence considered in the recovery/restoration of the corner.

- 1853 - Government Surveyor Brady set corner post. BTs: Maple, 8", S78°E, 42 links; Hemlock, 8", N63°E, 20 links.
- 1917 - Surveyor Webley described corner as "set dark grey boulder, 18 x 29 x 28 + on top"
- 1990 - Former Surveyor Kelly "found in place: PK nail set over iron in road CL's." Kelly set a witness monument and three iron pipe ties, and prepared a monument record sheet
- 2007 - Langlade County Surveyor Tiusty "found nail and set temporary ties. Dug with backhoe. At 3.7' deep, found dark grey stone, 20"± x 18"± x ? with chiseled X on top. Accepted stone as the best evidence of the corner. The nail found was S55°22'W, 1.98' from the corner (stone found)." Tiusty set three new ties and found a 1" iron pipe from Arnott, and prepared a monument record sheet. He did not set a mark on the road surface due to road paving.
- 2013 - I found three of the ties to the stone shown on Tiusty's monument record and set a mag spike at the road surface.

Physical description of the monument set:

I set a mag spike at the road surface, with ties as shown below.

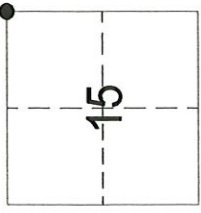
Describe the accessories used to perpetuate the location of the corner. Include a plan view drawing and indicate accessories found/set. Describe measuring point on bearing trees. Show any topographic features that would aid in future recovery of the corner.



I, Timothy J. Rusch, certify that the corner location shown on this record was determined by me or under my direction and control and that this U.S. Public Land Survey Monument Record is correct and complete to the best of my knowledge and belief.

Timothy J. Rusch 07-22-2013
Signature Date

INDEX No. J17 - 3011



● = Location of corner

Describe any material discrepancy between the location of the corner as restored or reestablished and the location of that corner as previously restored or reestablished by distance and direction. Show the discrepancy on the plan view drawing under (d), above. Show the distances between the corner as previously restored or reestablished and (1) the corner as restored or reestablished, and (2) to at least 2 of the witness monuments shown on the drawing in (d), above.

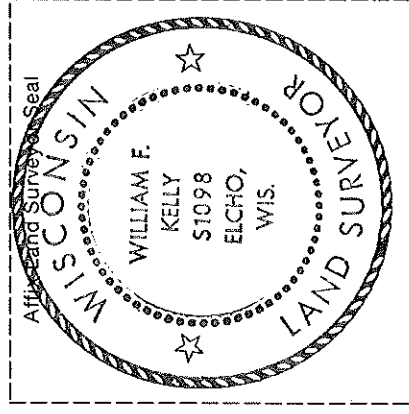
NONE

(f) Was the corner restored through acceptance of (1) an obliterated evidence location, or, (2) a found perpetuated location.?

(2)

(g & h) Was the corner reestablished through lost corner proportionate methods? If so, show the method, including the directions and distances to other public land survey corners used as evidence or used for proportioning in determining the corner location.

No



(i) I, William F. Kelly R.L.S. 1098
(type or print name)

certify that the corner location shown on this record was determined by me or under my direction and control and that this U.S. Public Land Survey Monument Record is correct and complete to the best of my knowledge and belief.

William F. Kelly
Signature

3-19-90
Date