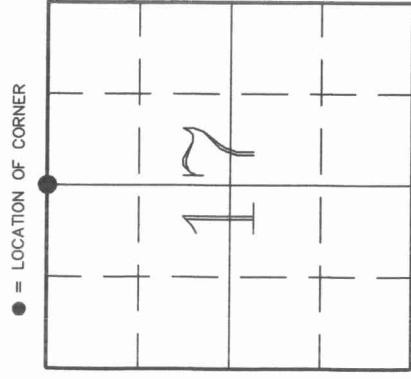


U.S. PUBLIC LAND SURVEY MONUMENT RECORD

43011080020

HISTORY OF ORIGINAL CORNER ESTABLISHMENT AND SUBSEQUENT RESTORATION AND DESCRIPTION OF ANY RECORD, MONUMENT OCCUPATIONAL, TESTIMONIAL OR OTHER EVIDENCE CONSIDERED:

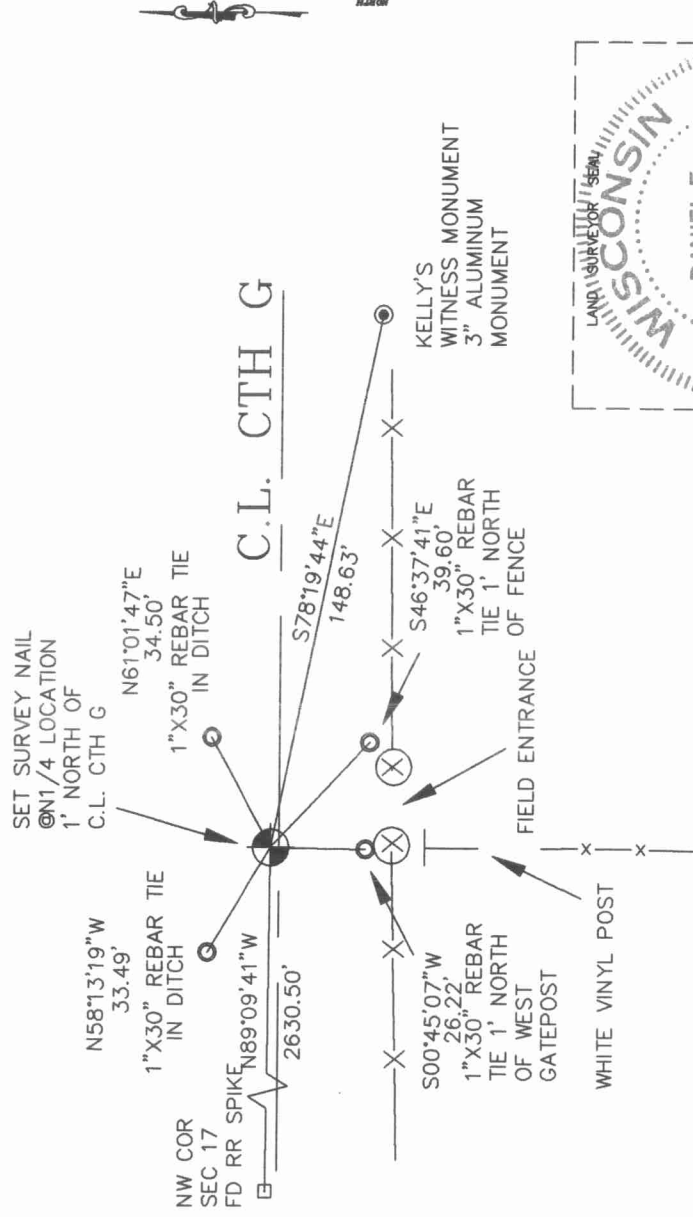
The original corner was established in 1853 by William T. Bradley. Original BT's: Elm 14" S6E 19lks., Maple 8" N39W 30lks. In August 1990, Kelly set a RR Spike and a 3" Witness Monument, but his location does not match up with a N-S fence line to the South or any of the 40 line fences in the area. In March 1994 Higginbotham and Brinkmeier located fencelines in the area and set a PK Nail on the extension of a N-S fence at centerline of CTH G. In May 2002, Gerry Bahar used Higginbotham's location for the N1/4 (PK Nail was gone due to resurfacing of the road) set a survey nail and tied out.



SECTION 17
 TOWNSHIP 30 NORTH, RANGE 11 EAST
 TOWN OF ROLLING
 LANGLADE COUNTY, WISCONSIN

- CORNER WAS: (CHECK ALL THAT APPLY)**
- RESTORED THROUGH ACCEPTANCE OF AN OBLITERATED EVIDENCE LOCATION
 - RESTORED THROUGH ACCEPTANCE OF A FOUND PERPETUATED LOCATION
 - CONSIDERED A LOST CORNER AND REESTABLISHED THROUGH LOST CORNER PROPORTIONATE METHODS (INCLUDE A PLAN VIEW DRAWING SHOWING DISTANCES AND DIRECTIONS TO OTHER PUBLIC LAND SURVEY CORNERS USED FOR PROPORTIONING AND DETERMINING THE CORNER LOCATION)
 - RESTORED OR REESTABLISHED IN A LOCATION THAT DIFFERS FROM A PREVIOUS RESTORATION OR REESTABLISHMENT (INCLUDE A PLAN VIEW DRAWING AND INDICATE WHAT WAS SET AND/OR FOUND)
 - CHECK IF THERE IS ADDITIONAL INFORMATION ON BACK

DESCRIBE THE MONUMENT AND ACCESSORIES USED TO PERPETUATE THE LOCATION OF THE CORNER (INCLUDE A PLAN VIEW DRAWING AND INDICATE WHAT WAS SET AND/OR FOUND) ALSO INCLUDE FOUR TIES TO THE SECTION CORNER AND DESCRIPTION OF THE TIES.



DANIEL E. HIGGINBOTHAM

(type or print name) CERTIFY THAT THE CORNER LOCATION SHOWN ON THIS RECORD WAS DETERMINED BY ME OR UNDER MY DIRECTION AND CONTROL AND THAT THIS U.S. PUBLIC LAND SURVEY MONUMENT RECORD IS CORRECT AND COMPLETE TO THE BEST OF MY KNOWLEDGE AND BELIEF.

D. E. Higginbotham
 SIGNATURE

2/12/03
 DATE



INDEX NO. J7

