

LANGLADE COUNTY U.S. PUBLIC LAND CORNER RESTORATION

The East 1/4 corner of Section 7, T. 30 N., R. 11 E., Langlade County, WI.

Corner was: (check all that apply)

- Restored through acceptance of an obliterated evidence location.
- Restored through acceptance of a found perpetuated location.
- Determined to be lost and re-established through proportionate methods.
- Show bearings and distances to PLSS corners used for proportioning, and show original distances).
- Restored/recovered/re-established in a location that differs from a previously established position.
- (Show difference in plan view below).
- Check here if additional information is shown on the reverse side of this form.

4 3011072000

Describe record evidence, recovered physical evidence, occupational evidence, testimonial evidence and all other evidence considered in the recovery/restoration of the corner.

The original corner was established in 1854 by William T. Bradley. Original bearing trees: elm, 14", N78°E, 6 links and a birch, 10", N 78° W, 41 links. In 1881, B.F. Dorr used this corner but didn't describe it. In 1988, former surveyor Kelly "Located 1/4" iron bar under pavement. Set RR spike over iron bar flush with road surface." He also set iron pipe ties and an aluminum witness monument. 05/23/00 D. Tlusty, M. Kielcheski found RR spike. Dug in road with backhoe. Found nothing. Accepted RR spike as the corner.

Physical description of the monument set:

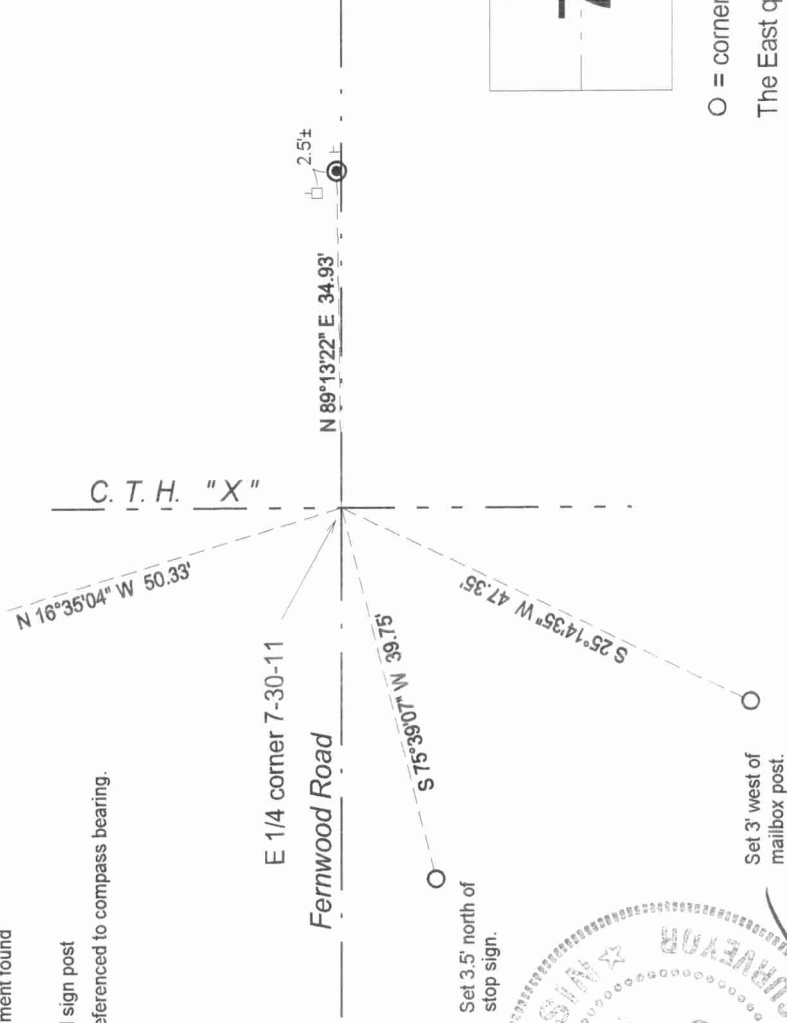
Road is to be resurfaced in near future, therefore no surface marker was set at this time.

Describe the accessories used to perpetuate the corner. Include a plan view drawing and accessories found/set. Describe measuring point on bearing trees. Show any topographic features that would aid in future recovery of the corner.

LEGEND

- 3/4" x 30" rebar set
- 3/4" iron pipe found
- 2" alum. monument found
- utility pole
- Set white vinyl sign post
- Tie bearings referenced to compass bearing.

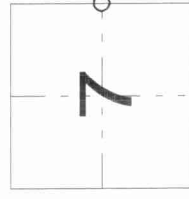
Field book: FB10-53



David E. Tlusty
3/27/02

I, David E. Tlusty, Registered Land Surveyor, as Langlade County Surveyor, certify that the corner location on this record was determined by me and that this U.S. Public Land Survey Monument Record is correct to the best of my knowledge and belief.

Index No. G 5 30-11



O = corner perpetuated
The East quarter
corner of Section 7,
T. 30 N., R. 11 E.,
Langlade County, WI