

CERTIFIED LAND CORNER RESTORATION

Index No. J-3

State of Wisconsin } ss.
County of LANGLADE

I WILLIAM F. KELLY, do hereby certify that on the 17th day of NOVEMBER, 1982, I found evidence of the S. 1/4 corner of SECT. 7 Township 30 North, Range 11 EAST, Fourth Principal Meridian, as described hereon; and that from this evidence I established a new monument and accessories as described hereon to perpetuate the original location of this corner.

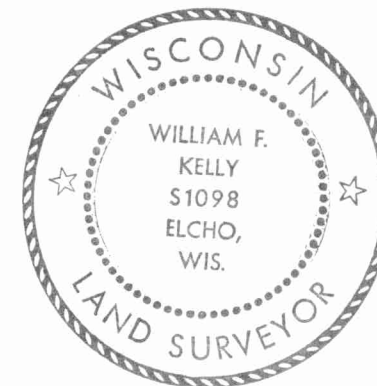
Resident witnesses:

History of original corner establishment:

ORIGINAL CORNER ESTABLISHED BY WILLIAM T. BRADLEY IN OCT., 1853.

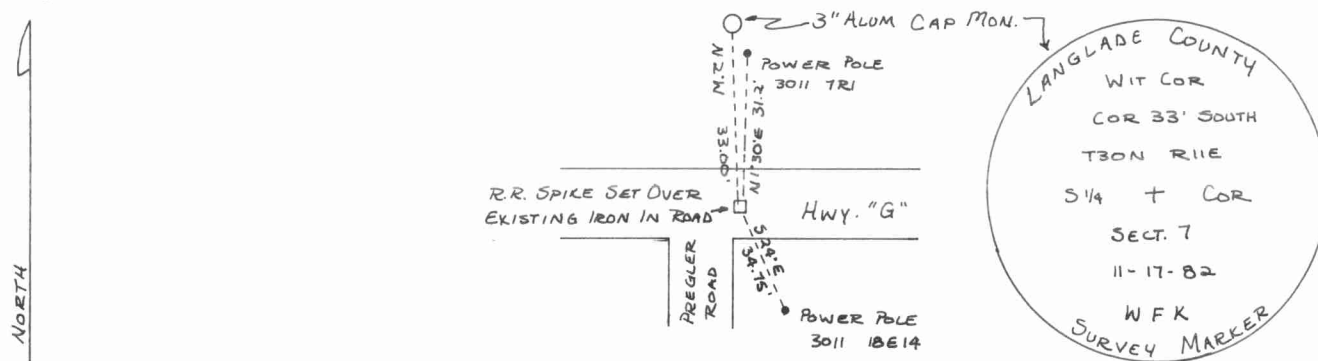
Description of corner evidence found:

SET R.R. SPIKE OVER IRON BURIED IN ROAD. IRON SET BY M. HUTCHINSON SET A 3" x 42" ALUMINUM CAP WITNESS MONUMENT.



William F. Kelly

Description of monument and accessories I established to perpetuate the original location of this corner.



Dated at ELCHO, Wis., this 17th day of NOVEMBER, 1982.

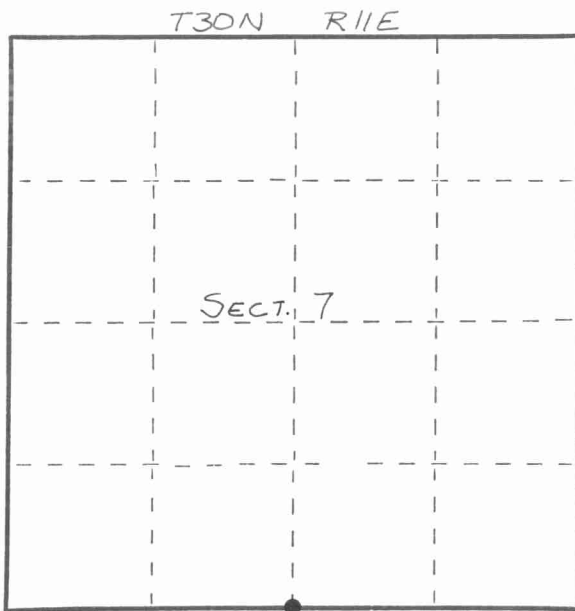
Signature: William F. Kelly Title: COUNTY SURVEYOR Registration No. 1098

Office of Register of Deeds, County of _____, I hereby certify that the within instrument was filed in this office for record on the _____ day of _____, 19____ at _____ o'clock _____ M.

(Register of Deeds)

By _____ Deputy

FORM 985 H. C. MILLER CO., MILWAUKEE



○ = Corner monument restored.

4362167000

