

# LANGLADE COUNTY U.S. PUBLIC LAND CORNER RESTORATION

The Southeast corner of Section 7, T. 30 N., R. 11 E., Langlade County, WI.

43011070000

**Corner was: (check all that apply)**

- Restored through acceptance of an obliterated evidence location.
- Restored through acceptance of a found perpetuated location.
- Determined to be lost and re-established through proportionate methods.
- Show bearings and distances to PLSS corners used for proportioning, and show original distances).
- Restored/recovered/re-established in a location that differs from a previously established position.
- (Show difference in plan view below).
- Check here if additional information is shown on the reverse side of this form.

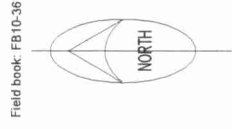
**Describe record evidence, recovered physical evidence, occupational evidence, testimonial evidence and all other evidence considered in the recovery/restoration of the corner.**

The original corner was established in 1853 by W. J. Bradley. Original bearing trees: maple, 10", S36°W, 18 links and an elm, 16", S84°E, 42 links. In 1878, FB143-72 (author unknown) shows that a road survey was made starting at this corner and running south. In 1881, in FB140-106, B. F. Dorr, surveyed from this corner north, 40.00 chains. In 1887, in FB146-01, Frank Duchac set a stone for this corner. In 1982, former surveyor Kelly said the original corner was re-monumented by Hutchinson in 1911. I can find no supporting records of Hutchinson. Kelly also said "Hutchinson corner identified with re-bar in 1930's. I can find no records supporting this statement. Kelly "set new RR spike over rebar". As the road is to be paved very soon, time did not allow for digging with backhoe to see if the existing RR spike is over the stone set by Duchac in 1887.

**Physical description of the monument set:**

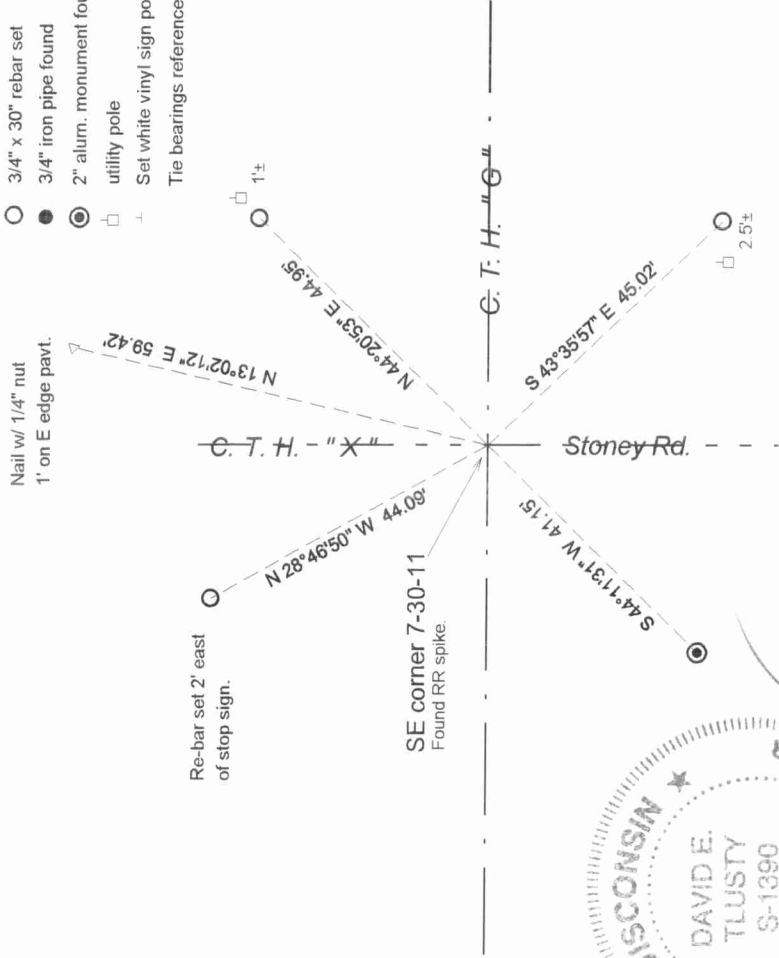
Left existing RR spike in place.

**Describe the accessories used to perpetuate the corner. Include a plan view drawing and accessories found/set. Describe measuring point on bearing trees. Show any topographic features that would aid in future recovery of the corner.**



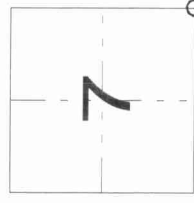
Field book: FB10-36

- LEGEND**
- 3/4" x 30" rebar set
  - 3/4" iron pipe found
  - ⊙ 2" alum. monument found
  - utility pole
  - ± Set white vinyl sign post
- The bearings referenced to compass bearing.



I, David E. Tlusty, Registered Land Surveyor, as Langlade County Surveyor, certify that the corner location on this record was determined by me and that this U.S. Public Land Survey Monument Record is correct to the best of my knowledge and belief.

Index No. J5 30-11



○ = corner perpetuated  
The Southeast corner of Section 7, T. 30 N., R. 11 E., Langlade County, WI

