

CERTIFIED LAND CORNER RESTORATION

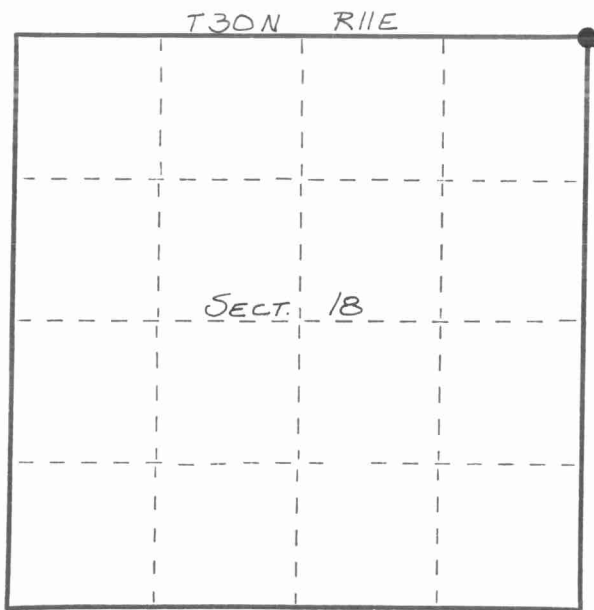
Index No. J-5

State of Wisconsin }
 County of LANGLADE } ss.

I WILLIAM F. KELLY, do hereby certify that on the 17th day of NOVEMBER, 1982, I found evidence of the NE corner of SECT. 18 Township 30, North, Range 11 EAST, Fourth Principal Meridian, as described hereon; and that from this evidence I established a new monument and accessories as described hereon to perpetuate the original location of this corner.

Resident witnesses:

.....



○ = Corner monument restored.

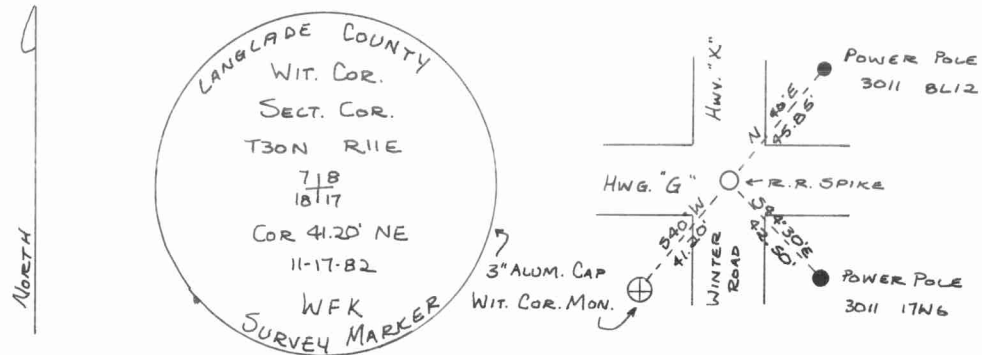
History of original corner establishment:

ORIGINAL CORNER ESTABLISHED BY
 WILLIAM T. BRADLEY IN OCT., 1853.

Description of corner evidence found:

ORIGINAL CORNER REMONUMENTED
 BY M. HUTCHISON APPROX. 1911.
 HUTCHISON CORNER IDENTIFIED WITH
 REBAR IN 1930'S.
 SET NEW RR SPIKE OVER REBAR
 AND SET A 3" x 42" ALUMINUM CAP
 WITNESS MONUMENT.

Description of monument and accessories I established to perpetuate the original location of this corner.



Dated at ELCHO, Wis., this 17th day of NOVEMBER, 1982.

Signature William F. Kelly Title COUNTY SURVEYOR Registration No. 1098
 (County Surveyor, Registered Land Surveyor, or other duly authorized official)

Office of Register of Deeds, County of _____, I hereby certify that the within instrument was filed in this office for record on the _____ day of _____, 19____ at _____ o'clock _____ M.

.....
 (Register of Deeds)

By..... Deputy



William F. Kelly

FORM 985 H. C. MILLER CO., MILWAUKEE

4301107000

