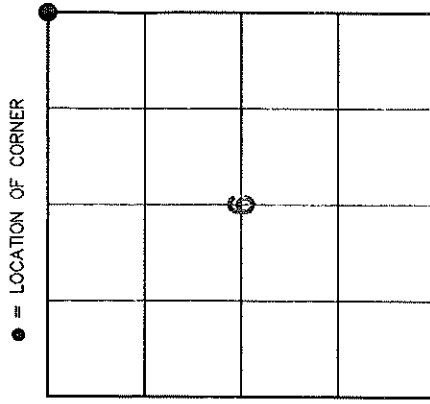


4301106 9000 2023

# U.S. PUBLIC LAND SURVEY MONUMENT RECORD

HISTORY OF ORIGINAL CORNER ESTABLISHMENT AND SUBSEQUENT RESTORATION AND DESCRIPTION OF ANY RECORD, MONUMENT OCCUPATIONAL, TESTIMONIAL OR OTHER EVIDENCE CONSIDERED:

THE ORIGINAL CORNER WAS SET BY BRADLEY IN 1854 WITH THE ORIGINAL BEARING TREES OF:  
 15" BIRCH S5°W 26 LINKS  
 10" ELM S22°W 59 LINKS  
 20" HEMLOCK S56°E 29 LINKS  
 10" HEMLOCK S72°E 25 LINKS  
 1920 HUTCHINSON PERPETUATED THE CORNER  
 1990 KELLY REPLACED AN IRON ROD WITH A 2" ALUMINUM MONUMENT WITH TIES  
 2023 I FOUND THE ALUMINUM MONUMENT & TIES AND SET SOME ADDITIONAL TIES



SECTION 6  
 TOWNSHIP 30 NORTH, RANGE 11 EAST  
 TOWN OF ROLLING  
 LANGLADE COUNTY, WISCONSIN

CORNER WAS: (CHECK ALL THAT APPLY)

- RESTORED THROUGH ACCEPTANCE OF AN OBLITERATED EVIDENCE LOCATION
- RESTORED THROUGH ACCEPTANCE OF A FOUND PERPETUATED LOCATION
- CONSIDERED A LOST CORNER AND REESTABLISHED THROUGH LOST CORNER PROPORTIONATE METHODS (INCLUDE A PLAN VIEW DRAWING SHOWING DISTANCES AND DIRECTIONS TO OTHER PUBLIC LAND SURVEY CORNERS USED FOR PROPORTIONING AND DETERMINING THE CORNER LOCATION)
- RESTORED OR REESTABLISHED IN A LOCATION THAT DIFFERS FROM A PREVIOUS RESTORATION OR REESTABLISHMENT (INCLUDE A PLAN VIEW DRAWING AND INDICATE WHAT WAS SET AND/OR FOUND)
- CHECK IF THERE IS ADDITIONAL INFORMATION ON BACK

DESCRIBE THE MONUMENT AND ACCESSORIES USED TO PERPETUATE THE LOCATION OF THE CORNER. (INCLUDE A PLAN VIEW DRAWING AND INDICATE WHAT WAS SET AND/OR FOUND) ALSO INCLUDE FOUR TIES TO THE SECTION CORNER AND DESCRIPTION OF THE TIES.

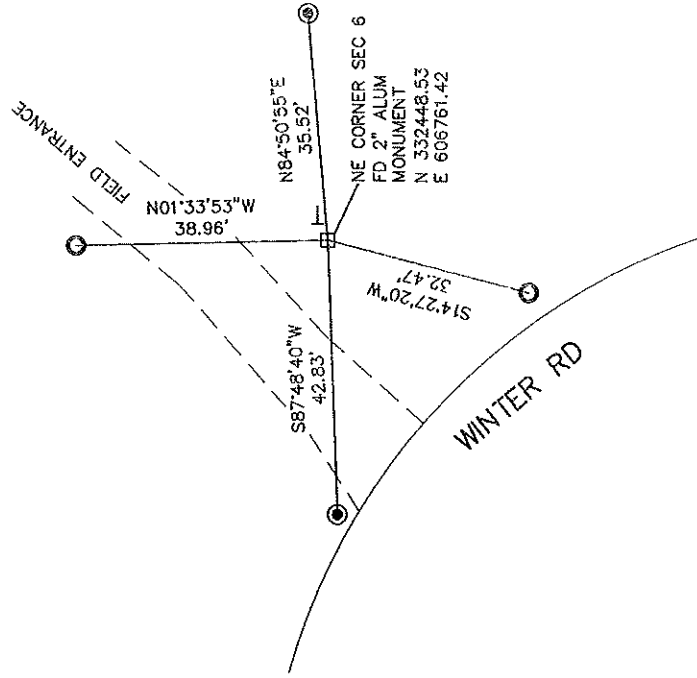
○ SET 3/4"X 30" RE-BAR WEIGHING 1.50 LBS/FT

⊙ FD 1" I. PIPE

● FD WITNESS MONUMENT

BEARINGS REFERENCED TO THE LANGLADE COUNTY COORDINATE SYSTEM

T SET 6 FOOT WHITE T-POST

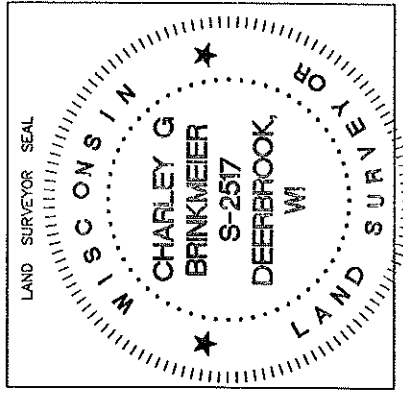


CHARLEY G. BRINKMEIER

(Type or print name) CERTIFY THAT THE CORNER LOCATION SHOWN ON THIS RECORD WAS DETERMINED BY ME OR UNDER MY DIRECTION AND CONTROL AND THAT THIS U.S. PUBLIC LAND SURVEY MONUMENT RECORD IS CORRECT AND COMPLETE TO THE BEST OF MY KNOWLEDGE AND BELIEF.

*[Handwritten Signature]*  
 SIGNATURE

OCT 20 2023  
 DATE



43011069000

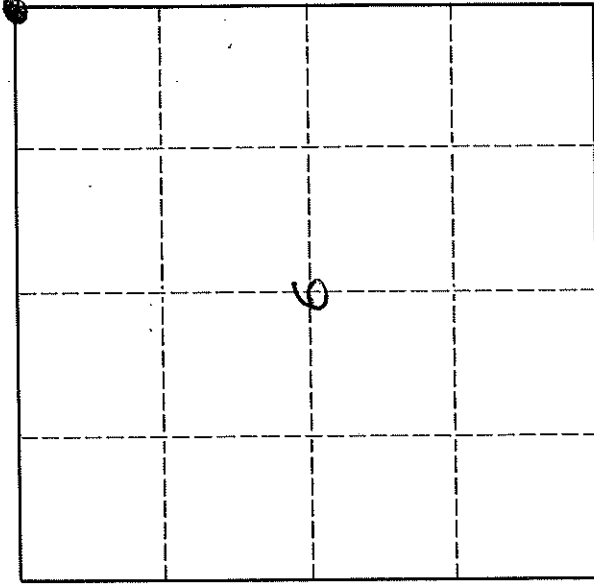
# U. S. PUBLIC LAND SURVEY MONUMENT RECORD

## INSTRUCTIONS:

This record shall show the location of the corner and shall include all of the following nine elements (a through i).

- (a) Identify the corner by reference to the U.S. public land survey system.
- O = Corner monument restored.

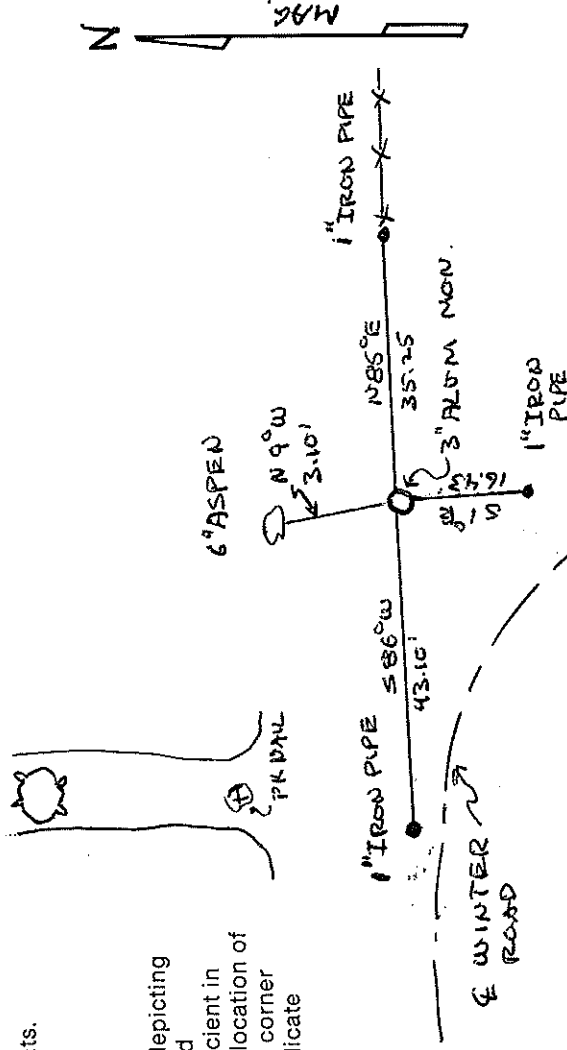
ORIGINAL CORNER ESTABLISHED  
 BY WILLIAM T BRADLEY IN  
 OCT 1853 AND JAMES W. MARSH  
 IN JULY 1851  
 CORNER PERPETUATED BY  
 H. HUTCHINSON IN 1920'S



T 30 N - R 11 E

- (b) Describe any record evidence, monument evidence, occupational evidence, testimonial evidence or any other material evidence you considered, and whether the monument was found or placed.  
 LOCATED WOOD HUB AND IRON ROD IDENTIFIED AS N.E.  
 CORNER OF SECTION. SET 3" ALUM. MONUMENT AND WITNESS  
 MONUMENTS

- (c) In the plan view drawing below, provide reference ties to at least 4 witness monuments, or, if the location is within a municipality, to at least 2 witness monuments. (Witness monuments shall be made of concrete, natural stone, iron or other equally durable material.)  
 Describe witness monuments.



- (d) Show a plan view drawing depicting the relevant monuments and reference ties which is sufficient in detail to enable accurate relocation of the corner monument if the corner monument is disturbed. Indicate north.

T 30 P R 11 E  
 N.E. COR. SECT 6  
 6-12-90  
 W.P.K.

Describe any material discrepancy between the location of the corner as restored or reestablished and the location of that corner as previously restored or reestablished by distance and direction. Show the discrepancy on the plan view drawing under (d), above. Show the distances between the corner as previously restored or reestablished and (1) the corner as restored or reestablished, and (2) to at least 2 of the witness monuments shown on the drawing in (d), above.

NONE

(f) Was the corner restored through acceptance of (1) an obliterated evidence location, or, (2) a found perpetuated location.?

(2)

(g & h) Was the corner reestablished through lost corner proportionate methods? If so, show the method, including the directions and distances to other public land survey corners used as evidence or used for proportioning in determining the corner location.

NONE

(i) I, William F Kelly S1098  
(type or print name)

certify that the corner location shown on this record was determined by me or under my direction and control and that this U.S. Public Land Survey Monument Record is correct and complete to the best of my knowledge and belief.

William F. Kelly  
Signature

6-14-90  
Date

