

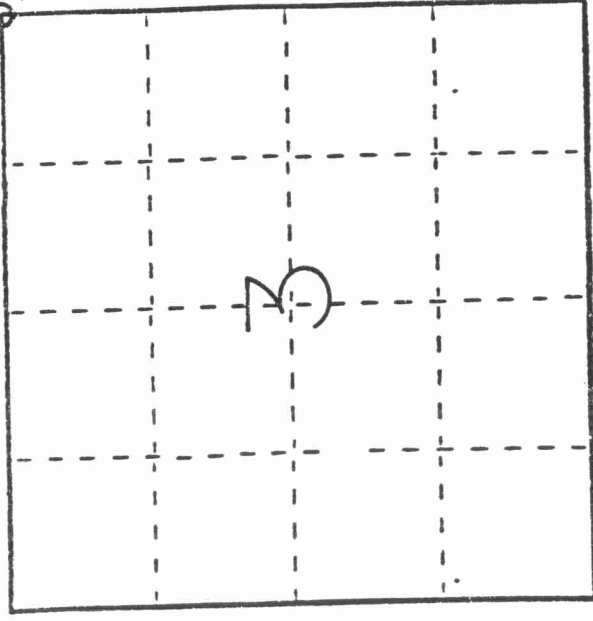
43011039000

U. S. PUBLIC LAND SURVEY MONUMENT RECORD

INSTRUCTIONS:

This record shall show the location of the corner and shall include all of the following nine elements (a through i).

- (a) Identify the corner by reference to the U.S. public land survey system.
- O = Corner monument restored.



Northeast Corner of Section 3, Township 30 North, Range 11 East, Town of Rolling, Langlade County, Wisconsin

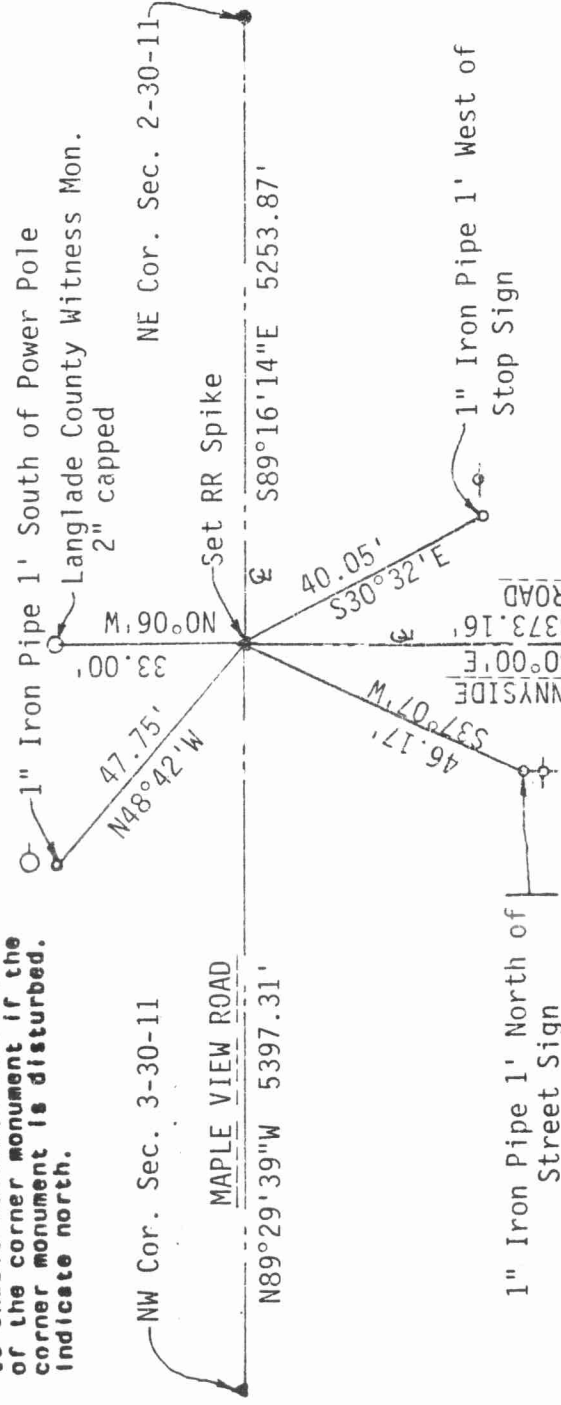
SEC. 3-30-11

- (b) Describe any record evidence, monument evidence, occupational evidence, testimonial evidence or any other material evidence you considered, and whether the monument was found or placed.

Checked area with magnetic locator, found no evidence of irons. Measured to Northwest corner of Section 3, Northeast corner of Section 2, and East 1/4 Corner of Section 3. Considered straight line - proportion East - West, but there is a considerable bend at S.T.H. 45. The corners to the East and West are set on Centerline Intersections, measured to approximate 1/4 Corner locations, found distances to be favorable. Held Centerline intersection of Mapleview Road and Sunnyside Road as corner location. Proportionate measurement distance would have put corner 6 feet West, but I feel the Centerline intersection is strong evidence of the obliterated corner. Local resident, Felix Perek, said he never heard of the corner existing, and he assumed the Section Corner to fall at the center of the roads.

- (c) In the plan view drawing below, provide reference ties to at least 4 witness monuments, or, if the location is within a municipality, to at least 2 witness monuments. (Witness monuments shall be made of concrete, natural stone, iron or other equally durable material.) Describe witness monuments.

- (d) Show a plan view drawing depicting the relevant monuments and reference ties which is sufficient in detail to enable accurate relocation of the corner monument if the corner monument is disturbed. Indicate north.



E 1/4 Cor. Sec. 3-30-11

(e) Describe any material discrepancy between the location of the corner as restored or reestablished and the location of that corner as previously restored or reestablished by distance and direction. Show the discrepancy on the plan view drawing under (d) above. Show the distances between the corner as previously restored or reestablished and (1) the corner as restored or reestablished, and (2) to at least 2 of the witness monuments shown on the drawing in (d), above.

NONE

(f) Was the corner restored through acceptance of (1) an obliterated evidence location, or, (2) a found perpetuated location?

Obliterated Evidence

(g) Was the corner reestablished through lost corner proportionate methods? If so, show the method, including the directions and distances to other public land survey corners used as evidence or used for proportioning in determining the corner location?

Heid Center Line Intersection, fence lines, property lines supported Road location as probable corner location.

(1) I, David L. Osterbrink, Registered Land Surveyor,
(type or print name) certify that the corner location shown
on this record was determined by me or under my direction and
control and that this U.S. Public Land Survey Monument Record is
correct and complete to the best of my knowledge and belief.

David L. Osterbrink

Signature

5-15-91

Date

