

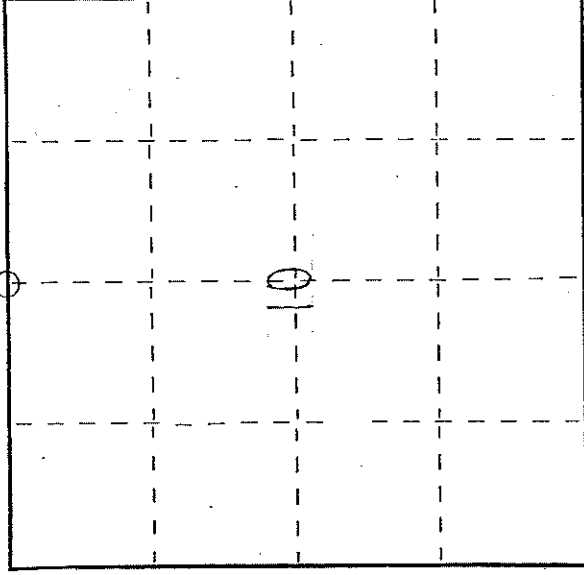
4301030000

Paper weight - 32# 25% Rag Ledger (minimum)

U. S. PUBLIC LAND SURVEY MONUMENT RECORD

I N S T R U C T I O N S : This record shall show the location of the corner and shall include all of the following nine elements (a through i).

- (a) Identify the corner by reference to the U.S. public land survey system.
- = Corner monument restored.



T 30 R 1 E

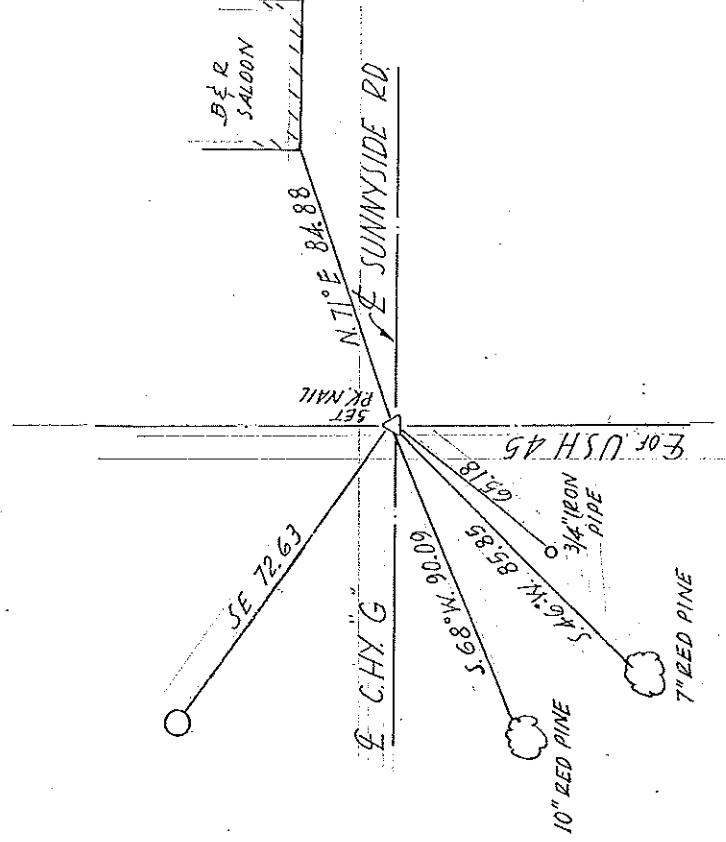
Original corner established by James Marsh in 1853.

- (b) Describe any record evidence, monument evidence, occupational evidence, testimonial evidence or any other material evidence you considered, and whether the monument was found or placed.

No physical evidence of the corner monument was found. Re-established corner location from previous monument record ties. New ties were set as shown below.

- (c) In the plan view drawing below, provide reference ties to at least 4 witness monuments, or, if the location is within a municipality, to at least 2 witness monuments. (Witness monuments shall be made of concrete, natural stone, iron or other equally durable material, ~~except~~ ~~wood~~.) Describe witness monuments.

- (d) Show a plan view drawing depicting the relevant monuments and reference ties which is sufficient in detail to enable accurate relocation of the corner monument if the corner monument is disturbed. Indicate north.



E15
30-11

(e) Describe any material discrepancy between the location of the corner as restored or reestablished and the location of that corner as previously restored or reestablished by distance and direction. Show the discrepancy on the plan view drawing under (d), above. Show the distances between the corner as previously restored or reestablished and (1) the corner as restored or reestablished, and (2) to at least 2 of the witness monuments shown on the drawing in (d), above.

None

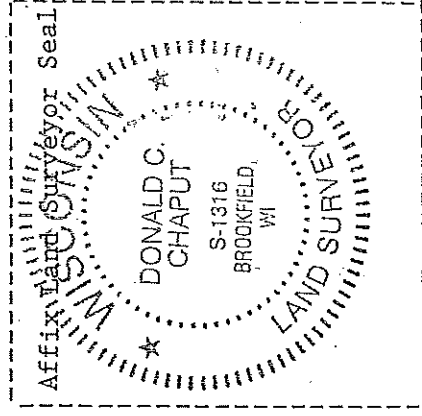
(f) Was the corner restored through acceptance of (1) an obliterated evidence location, or, (2) a found perpetuated location? *(1)*

(g&h) Was the corner reestablished through lost corner proportionate methods? If so, show the method, including the directions and distances to other public land survey corners used as evidence or used for proportioning in determining the corner location?

(i) I, DONALD C. CHAPUT (type or print name) certify that the corner location shown on this record was determined by me or under my direction and control and that this U.S. Public Land Survey Monument Record is correct and complete to the best of my knowledge and belief.

Donald C. Chaput
Signature

9-17-03
Date



David E. Tlusty, RLS
Langlade County Surveyor
837 Clermont Street
Antigo, WI 54409-0505
715-627-6311
fax 715-627-6281

Langlade County
Surveyor

Memo

To: Donald Chaput
From: David E. Tlusty, RLS
CC:
Date: February 4, 2004
Re: Tie sheets

43011023000

Hi Don,

Last fall you sent me some tie sheets for some work you did in Section 3-30-11E, your project number 5161012.

I'm getting caught up on my filing and noticed that on two of the tie sheets, tie monuments are not identified and on one sheet, a tie distance is missing. Could you please update the two enclosed originals and when I receive them back from you, I'll replace the copies that I have filed.

Thanks.

RECORD AND CERTIFICATION OF U.S.
PUBLIC LAND SURVEY CONTROL STATION

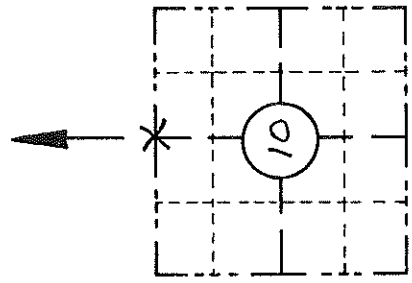
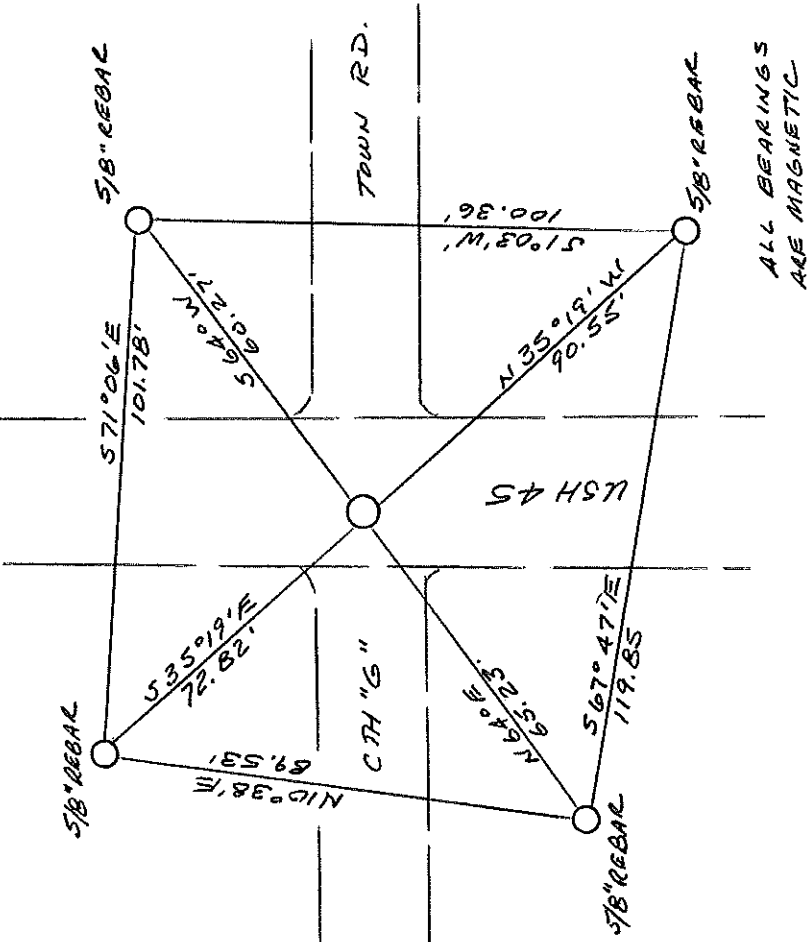
E-D-716-72

43011030000

State of Wisconsin Department of Transportation

District 7	Project I.D. 1602-05-00	Located by R. JOHNSON SURVEY CREW CHIEF	
Corner N 1/4	10 SECTION 30 N	Range (E,W) 11 E	County LANGLADE
Wisconsin Coordinates CORNER	East (X) N/A	North (Y)	Elevation (Z)
Control Station Name	East (X)	North (Y)	Elevation (Z)
Horizontal — NORTH AMERICAN, 1927	CONTROL DATUM Vertical — MEAN SEA LEVEL, 1929 ADJUSTMENT		
Horizontal —	Order	Vertical —	Order

SKETCH



LOCATION SKETCH

(Location of landmark indicated by "X")

I hereby certify that on the 6TH day of MARCH 1992, that I did locate the above corner which was evidenced by P.E. MAIL

_____ ; I further certify that to perpetuate the location of such corner I did, at the exact location thereof, place a permanent marker consisting of LEFT PK.

_____ ; I further certify that I did establish 4 references or witness monuments consisting of 5/8" X 24" REINFORCING BARS WITH RED PLASTIC WISDOT CAPS

_____ located as shown above:

SEAL

Signature Registered Land Surveyor	Registration No. S --	Title
------------------------------------	--------------------------	-------

CORNER E-15 SECTION 10 TOWN 30 N RANGE E15 11 E

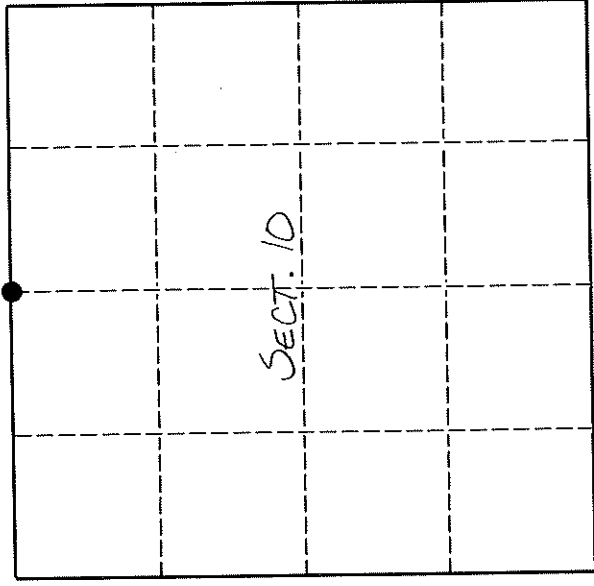
43011030020

U. S. PUBLIC LAND SURVEY MONUMENT RECORD

INSTRUCTIONS:

This record shall show the location of the corner and shall include all of the following nine elements (a through i).

- (a) Identify the corner by reference to the U.S. public land survey system.
- = Corner monument restored.



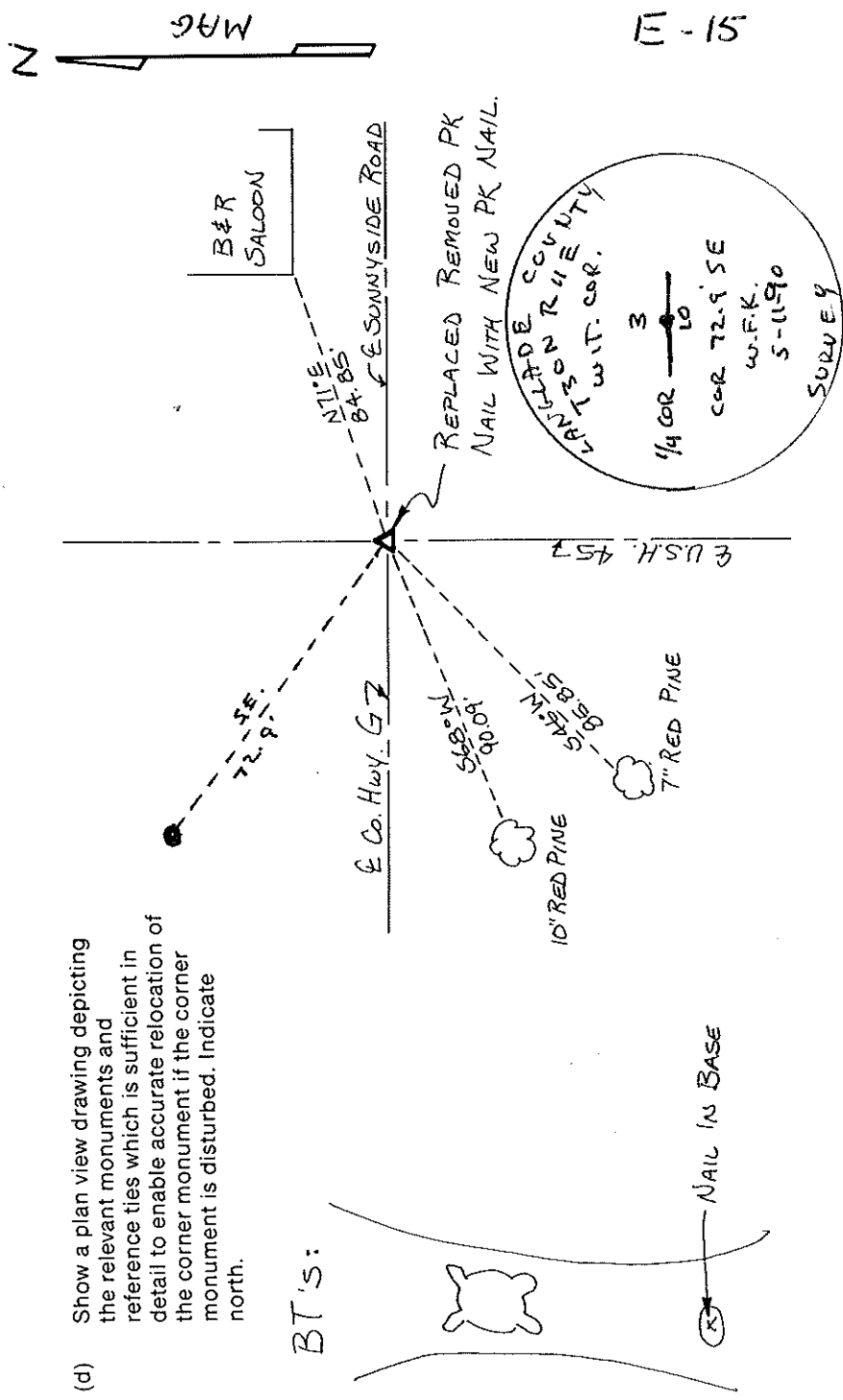
T30N - R11E

ORIGINAL CORNER ESTABLISHED BY WILLIAM T. BRADLEY IN 1853.

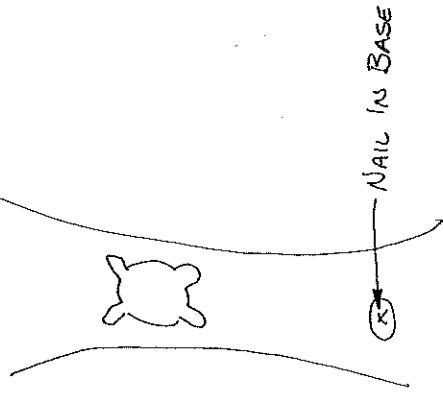
- (b) Describe any record evidence, monument evidence, occupational evidence, testimonial evidence or any other material evidence you considered, and whether the monument was found or placed.

REPLACED EXISTING PK NAIL THAT HAD BEEN REMOVED (BY SNOW PLOW) WITH NEW PK NAIL. SET WITNESS MONUMENTS.

- (c) In the plan view drawing below, provide reference ties to at least 4 witness monuments, or, if the location is within a municipality, to at least 2 witness monuments. (Witness monuments shall be made of concrete, natural stone, iron or other equally durable material.) Describe witness monuments.



BT's:



E-15

Describe any material discrepancy between the location of the corner as restored or reestablished and the location of that corner as previously restored or reestablished by distance and direction. Show the discrepancy on the plan view drawing under (d), above. Show the distances between the corner as previously restored or reestablished and (1) the corner as restored or reestablished, and (2) to at least 2 of the witness monuments shown on the drawing in (d), above.

NONE

(f) Was the corner restored through acceptance of (1) an obliterated evidence location, or, (2) a found perpetuated location?

(1)

(g & h) Was the corner reestablished through lost corner proportionate methods? If so, show the method, including the directions and distances to other public land survey corners used as evidence or used for proportioning in determining the corner location.

No

(i) I, WILLIAM F. KELLY (type or print name) R.L.S. 1098

certify that the corner location shown on this record was determined by me or under my direction and control and that this U.S. Public Land Survey Monument Record is correct and complete to the best of my knowledge and belief.

William F. Kelly
Signature

3-29-90
Date

