

# U.S. PUBLIC LAND SURVEY MONUMENT RECORD

(Prepared and as required by S. A-E 7.08 WI Administrative Code) *43011029020*

The North Quarter Corner of Section 2, T. 30 N., R. 11 E., Langlade County, WI

Corner was: (check all that apply)

- Restored through acceptance of an obliterated evidence location.
- Restored through acceptance of a found perpetuated location.
- Determined to be lost and re-established through proportionate methods.  
(Show bearings and distances to PLSS corners used for proportioning.)
- Restored/recovered/reestablished in a location that differs from a previously established position. (Show difference in plan view below.)
- Check here if additional information is shown on the reverse side of this form.

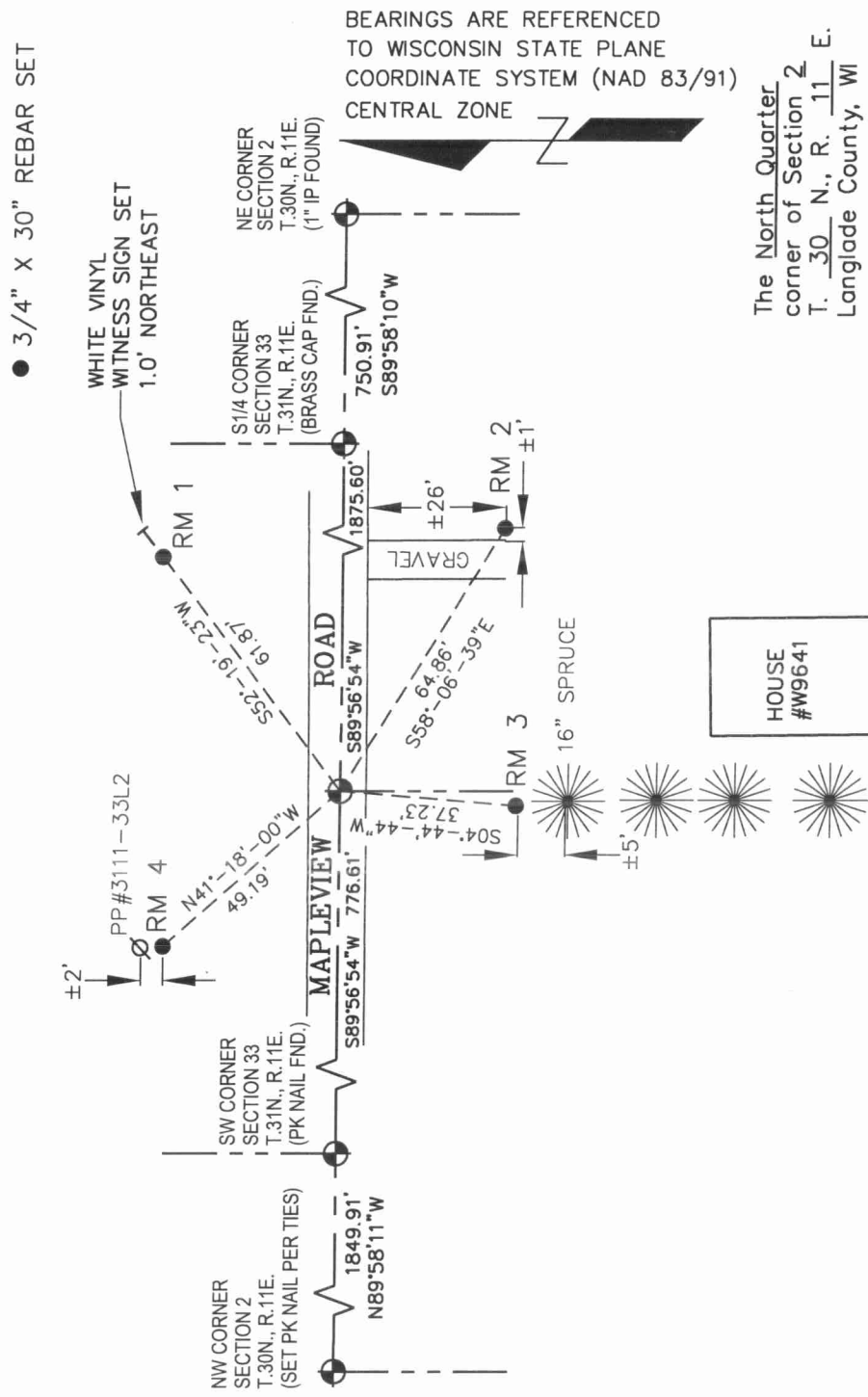
Describe record evidence, recovered physical evidence, occupational evidence, testimonial evidence and all other evidence considered in the recovery/restoration of the corner.

This Corner was not established in the Original Township Subdivision Survey. Between 1882 and 1890 B.F. Dorr ran the North line of Section 2 and measured 79.50 chains (5247.00') vs. our measurement of 5253.04'. He references 2 bearing trees at the N1/4 Corner but does not make mention of what was set marking this location. (No bearing trees remain: 12" Birch S22°W 4 Links, 12" Sugar N13-1/2°E 19 Links) I re-established this corner equidistant between the NE and NW Corners of Section 2 and on the South Line of the SW1/4, Section 33, T.31N., R.11E.

Physical description of the monument set:

- I set a Mag Nail at corner.

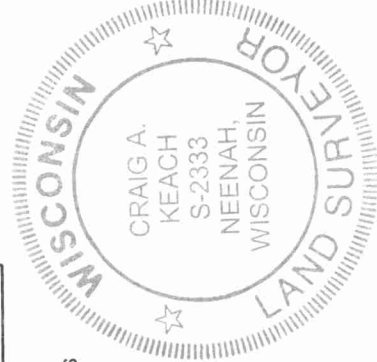
Describe the accessories used to perpetuate the location of the corner. Include a plan view drawing and indicate accessories found/set. Describe measuring point on bearing trees. Show any topographic features that would aid in future recovery of the corner.



INDEX No. *A-19 30-11*  
 DWG. NO. A-13

The North Quarter corner of Section 2, T. 30 N., R. 11 E., Langlade County, WI

● = Location of corner



I, CRAIG A. KEACH S-2333 certify that the corner location on this record was determined by me or under my direction and control and that this U.S. Public Land Survey Monument Record is correct and complete to the best of my knowledge and belief.

*Craig A. Keach*  
 Signature  
 1129107  
 Date