

**LANGLADE COUNTY
U.S. PUBLIC LAND CORNER RESTORATION**

The South Quarter corner of Section 1, T. 30 N., R. 11 E., Langlade County, WI.

Corner was: (check all that apply)

9110350020
43011010020

- Restored through acceptance of an obliterated evidence location.
- Restored through acceptance of a found perpetuated location.
- Determined to be lost and re-established through proportionate methods.
- Show bearings and distances to PLSS corners used for proportioning, and show original distances).
- Restored/recovered/re-established in a location that differs from a previously established position.
- (Show difference in plan view below).
- Check here if additional information is shown on the reverse side of this form.

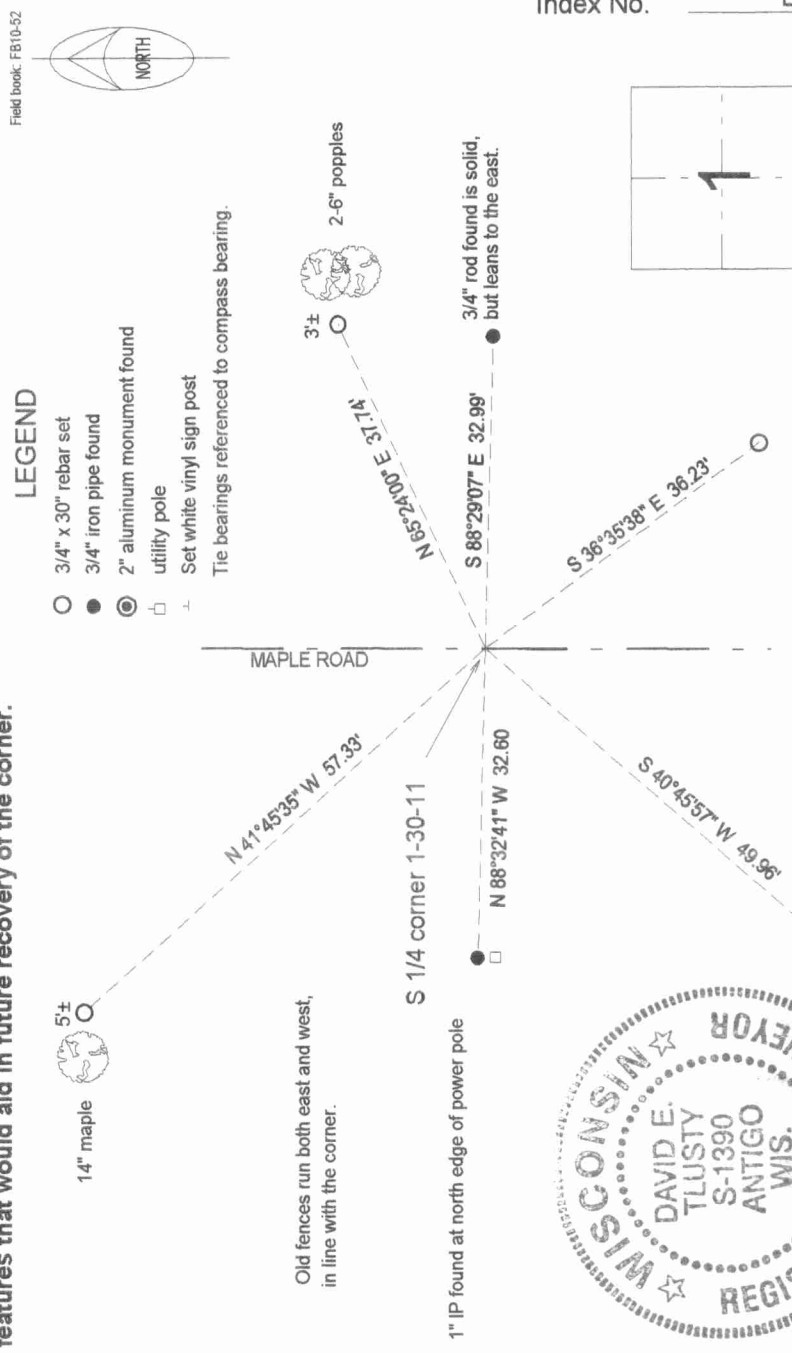
Describe record evidence, recovered physical evidence, occupational evidence, testimonial evidence and all other evidence considered in the recovery/restoration of the corner.

The original corner was established in 1853 by William T. Bradley. Original bearing trees: maple, 10", N19°W, 25 links, and a maple, 15", N 70° E, 15 lks. In 1908, E.S. Brooks found "1/4 P" and set stone for same, 6" x 6" x 20" with + on top. In 1993, Ed Abendroth, surveyor, "found PK nail and 1" iron pipe approximately 33 feet west of corner from former survey. Placed 3/4" iron bar during former survey boundary corner placement. Distances to survey done by Wm. Kelly were checked." 05/23/00 Dave Tlusty, Mike Kielcheski dug with backhoe. Didn't find stone of record. Accepted corner by Abendroth as best evidence and perpetuated that location as shown below.

Physical description of the monument set:

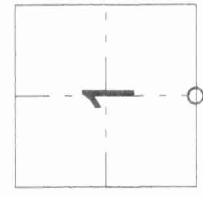
Road is to be rebuilt in near future, therefore nothing was set at this time.

Describe the accessories used to perpetuate the corner. Include a plan view drawing and accessories found/set. Describe measuring point on bearing trees. Show any topographic features that would aid in future recovery of the corner.



David E. Tlusty
6/14/2000

Index No. E 23 30-11



○ = corner perpetuated
The South Quarter corner of Section 1, T. 30 N., R. 11 E., Langlade County, WI

I, David E. Tlusty, Registered Land Surveyor, as Langlade County Surveyor, certify that the corner location on this record was determined by me and that this U.S. Public Land Survey Monument Record is correct to the best of my knowledge and belief.