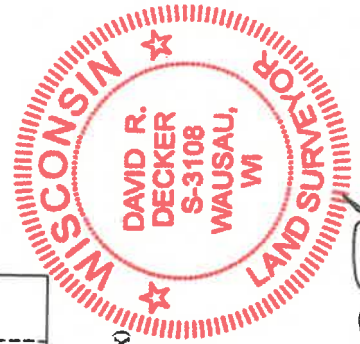
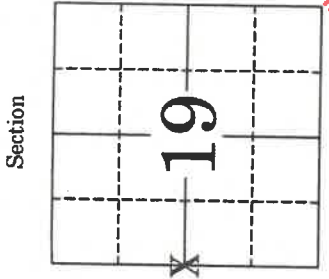
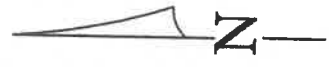


**MARATHON COUNTY U.S. PUBLIC LAND
SURVEY MONUMENT LOCATION RECORD**

4361024 2000 2017

Found Section 19
 Set Township 30 N
 Re-set Range 11 E
 Re-Tied

Corner Location: West 1/4 Corner Section 19
 Monument Type: PK Nail
 County Coordinate: N _____, E _____
 Date of Survey: 3/22/2017 Datum: _____
 Survey Party: D. Decker
 Field Book: Loose Paper and Data File Page Number: _____



Location
(indicated by X)
Seal

D. R. Decker

David R. Decker, PLS-3108

Date: 4/27/2017

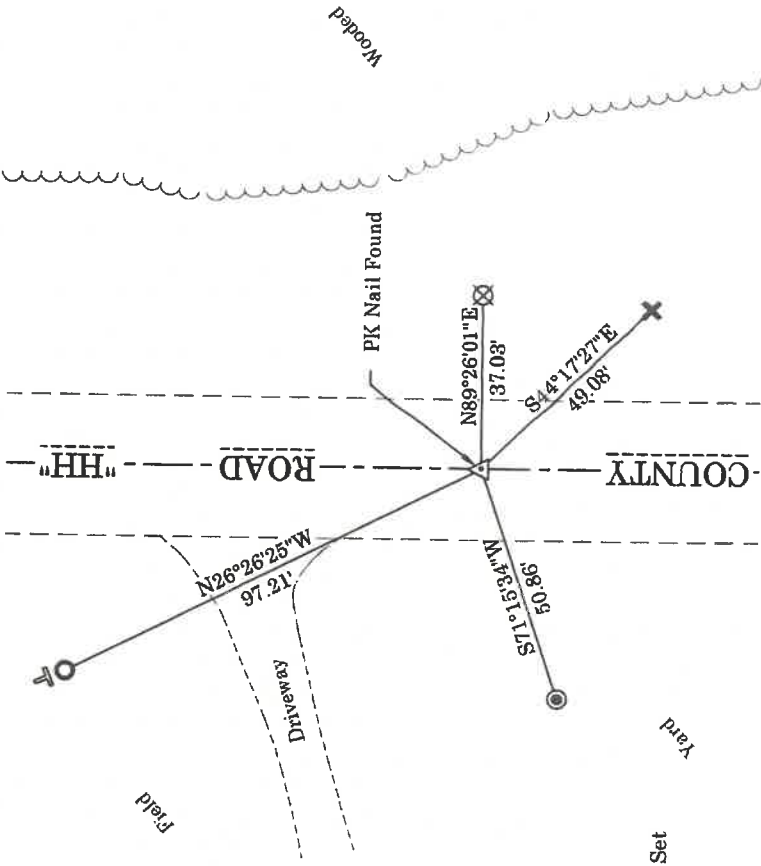
BASIS FOR MONUMENT LOCATION:

(Describe method of survey and corner authentication)

7/13/1992 - T. Arnott set the corner by single proportionate measurement using the Southeast corner, the South 1/16th corner, and the Northeast corner.

3/22/2017 - I found a PK nail at the corner location that fit the three (3) remaining ties well. Added one (1) new iron tie to the Northwest and re-measured to existing ties to perpetuate the corner location as shown below.

TIE SKETCH: Show minimum of four (4) horizontal tie distances to fixed witness monuments. Describe all monuments found or set.



Bearings are based on the
Marathon County Coordinate
System Nad83 (2011).

- 3/4" Iron Bar Found
- Aluminum Monument Found
- Chiseled "X" in Boulder Found
- 1-1/4" O.D. x 24" Iron Pipe With Cap Set
- Vinyl T-Post