

CERTIFIED LAND CORNER RESTORATION

Index No. Q-1

430 10 24 10 00

State of Wisconsin }  
County of L. ANGLADE } ss.

I WESLEY J. TRADEWELL, do hereby certify that on the 10<sup>TH</sup> day of MAY, 1978, I found evidence of the NORTHWEST corner of SW 1/4, SW 1/4, SECTION 19 Township 30, North, Range 11 EAST, Fourth Principal Meridian, as described hereon; and that from this evidence I established a new monument and accessories as described hereon to perpetuate the original location of this corner.

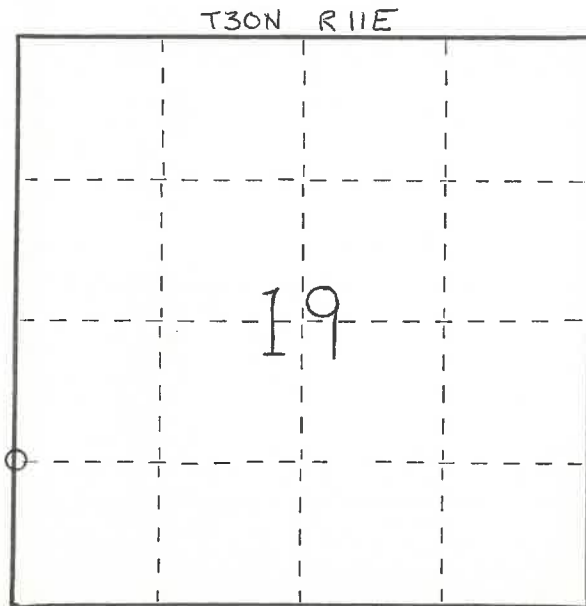
Resident witnesses:

.....

.....

.....

FORM 985 H. C. MILLER CO., MILWAUKEE



○ = Corner monument restored.

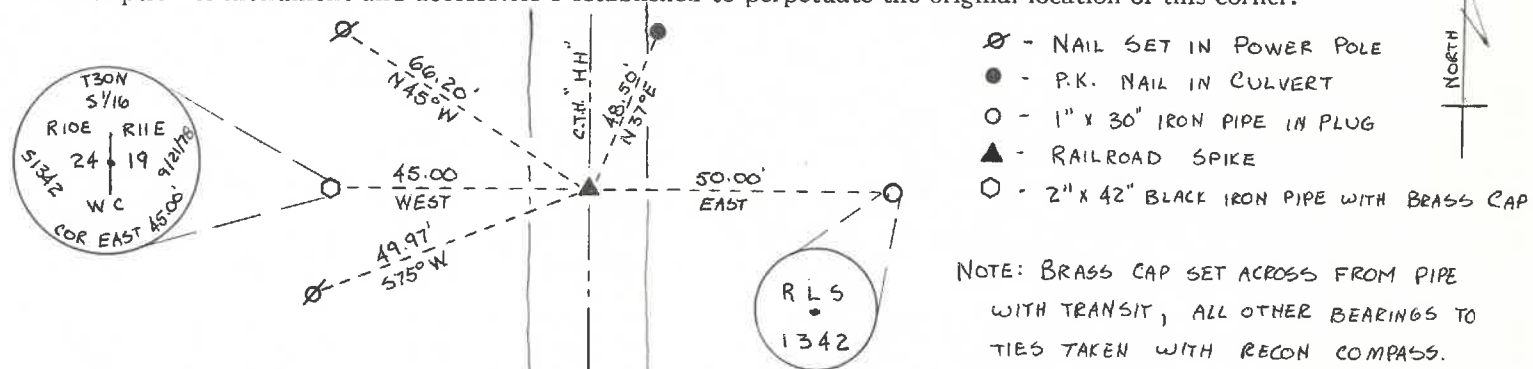
History of original corner establishment:



Description of corner evidence found:

FOUND NW AND SW CORNERS OF SECTION 19, BUT COULD NOT FIND W 1/4 CORNER. OLD MARATHON COUNTY HIGHWAY NOTES SAID SECTION 19 WAS 80 CHAINS, OUR MEASUREMENT WAS 5267.35'. THE 1/16 CORNER WAS SET AT 1316.84'. SET R.R. SPIKE AT CORNER. (CORNER WAS SET 5-10-78 AND WITNESSED 9-21-78.)

Description of monument and accessories I established to perpetuate the original location of this corner.



Dated at ANTIGO, Wis., this 3<sup>RD</sup> day of OCTOBER, 1978.

Signature Wesley J. Tradewell Title REGISTERED LAND SURVEYOR Registration No. 1342  
(County Surveyor, Registered Land Surveyor, or other duly authorized official)

Office of Register of Deeds, County of \_\_\_\_\_, I hereby certify that the within instrument was filed in this office for record on the \_\_\_\_\_ day of \_\_\_\_\_, 19\_\_\_\_ at \_\_\_\_\_ o'clock \_\_\_\_\_ M.

(Register of Deeds)

By \_\_\_\_\_ Deputy