

**LANGLADE COUNTY U.S. PUBLIC LAND
SURVEY MONUMENT LOCATION RECORD**

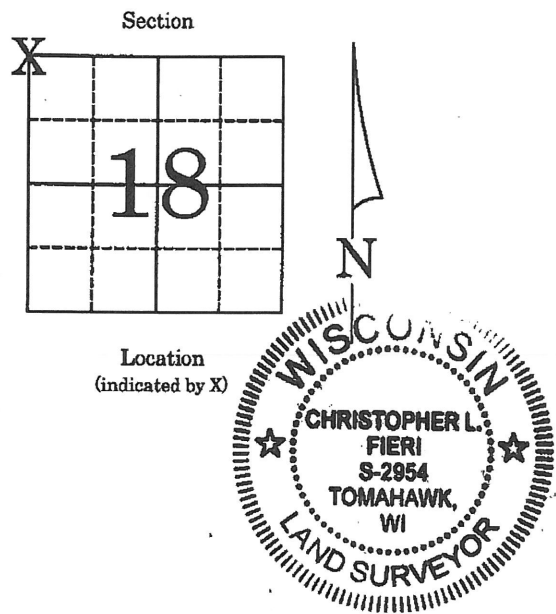
06 10 12 00 00
4301012 0000

Corner Location: Northwest Corner Section 18
 Monument Type: SMP (Survey Marker Pin)
 County Coordinate: N _____, E _____
 Date of Survey: 10/11/2011 Datum: _____
 Survey Party: C. Fieri & E. Pierce
 Field Book: Looseleaf Page Number: _____

Found Section 18
 Set Township 30 N
 Re-set Range 11 E
 Re-Tied Rolling
 City, Village, Town _____

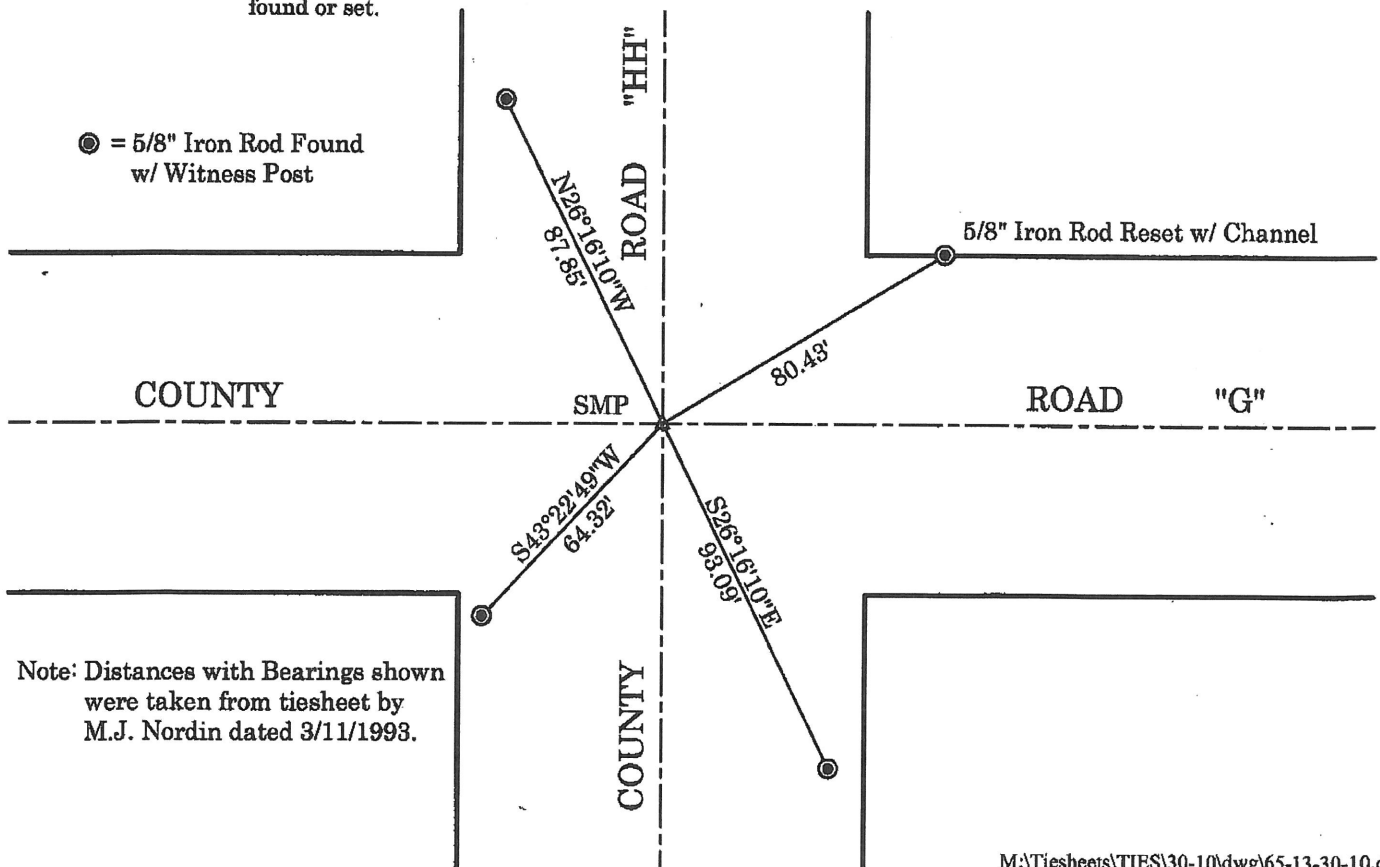
BASIS FOR MONUMENT LOCATION:

(Describe method of survey and corner authentication)
 3/11/1993 - M.J. Nordin searched the area for the corner and found a Railroad spike at the centerline intersection of the county roads. He accepted this position as the section corner and tied out.
 10/11/2011 - E. Pierce and I visited this corner because we were informed by the Harrison Town Chairman that a car accident had destroyed the NE tie. Intersected the three remaining ties and set an SMP at the corner location. Reset the witness monument to the NE.



Location (indicated by X)
Christopher L. Fieri
 Christopher L. Fieri, RLS - 2954
 Date: 12/2/2011

TIE SKETCH: Show minimum of four (4) horizontal tie distances to fixed witness monuments. Describe all monuments found or set.



Note: Distances with Bearings shown were taken from tiesheet by M.J. Nordin dated 3/11/1993.